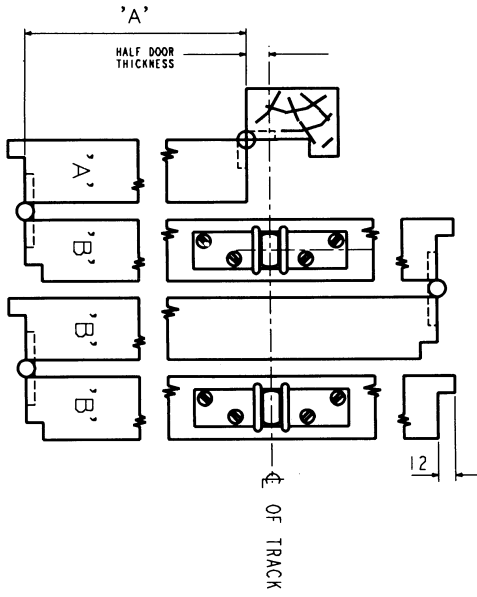


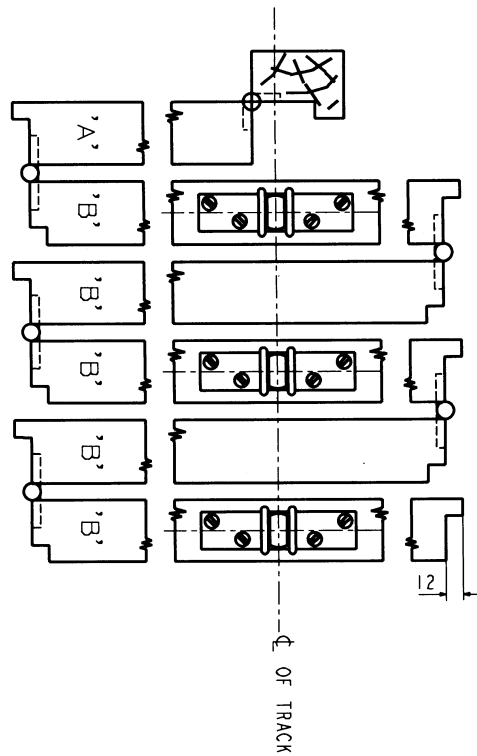
JOINERY INSTRUCTIONS

CENTREFOLD PARTITION (COLLEGE) 290, 301, 305

THREE 1/2 LEAF UNIT HINGED TO POST → FOLDING



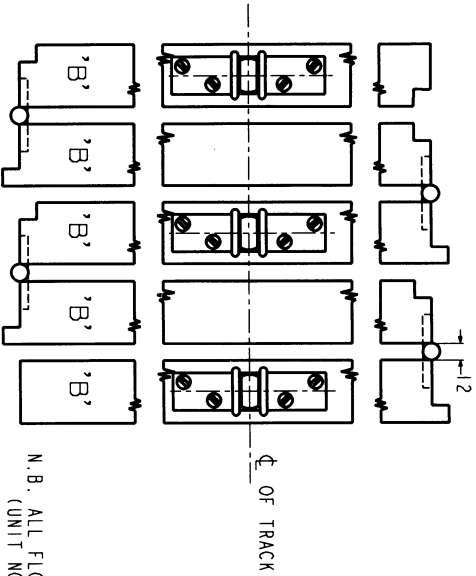
FIVE 1/2 LEAF UNIT HINGED TO POST → FOLDING



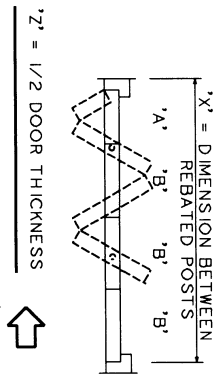
For College Gear see also: Operating and Maintenance Instructions No.2769

PLEASE NOTE : COUNCIL CENTRE FOLDING SHOWN

FIVE LEAF 'FLOATING' UNIT → FOLDING



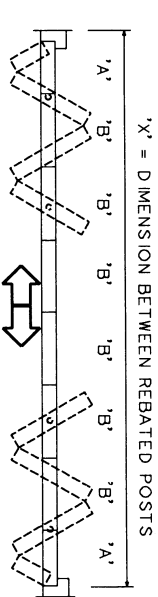
N.B. ALL FLOATING LEAVES ARE EQUAL (SAME AS 'B') (UNIT NOT HINGED TO POST - MUST BE IN 5 OR 7 LEAVES)



$$\frac{X' + Z'}{2} = \frac{X' + Z'}{7 \left(\frac{16}{10} \text{ OF } 1/2 \text{ LEAVES}\right)} = 1/2 'B' \text{ LEAF}$$

$$1/2 'B' \times 2 = 'B' \text{ LEAF}$$

$$\text{LEAF 'A'} = 1/2 'B' - 'Z'$$



$$\frac{X' + 2Z'}{2'A' + (6'B' \times 2)} =$$

$$\frac{X' + 2Z'}{14 \left(\frac{16}{10} \text{ OF } 1/2 \text{ LEAVES}\right)} =$$

$$1/2 'B' \text{ LEAF}$$

$$1/2 'B' \times 2 = 'B' \text{ LEAF}$$

$$\text{LEAF 'A'} = 1/2 'B' - 'Z'$$

IMPORTANT :-
LEAF WIDTHS ARE TO THE
OF HINGE PINNLES,
ESSENTIAL CLEARANCES
TO BE ALLOWED FOR.

HENDERSON