

INDUSTRIAL CURTAINS CABLE CARRYING SYSTEMS

INDIVIDUAL LOAD MAX 5kg, 20kg or 40kg

APPLICATION

- ▶ Light overhead track for industrial curtains.
- ▶ The track will also support electrical or other cables required for travelling cranes, gantries or moving machinery.
- ▶ Track will also carry small hand machinery, leaving working areas clear.

LOAD SPECIFICATION

For Track	280	290
Industrial curtains		
Max Hanger Capacity	5kg	20kg
Cable Carriers		
Max Hanger Capacity	-	40kg

GEAR SPECIFICATION

Track - straight 280 (1.2mm thickness) or 290 (2mm thickness)
 Material: galvanised steel
 Standard lengths: 1800mm, 2000mm, 2500mm, 3000mm, 4000mm and 6000mm (290 track only).

Tracked - curved 280TC (1.2mm thickness) or 6000K (2mm thickness)
 280 track curves have a 381mm radius with 230mm straight ends for joining to straight track sections.
 290 track curves have a 581mm radius with 152mm straight ends for joining to straight track sections.

Brackets: **290**
 soffit fixing 3A/290 aluminium alloy pressure die castings
 soffit fixing 4A/290 aluminium alloy pressure die castings
 face fixing 1A/290 aluminium alloy pressure die castings

Fix at every 900mm centres (maximum).

Joining brackets 3AX/290, 4AX/290 or 1AX/290 are recommended on all track joints.
 The overhead structure should be examined by an engineer as to its suitability for supporting the desired loadings.

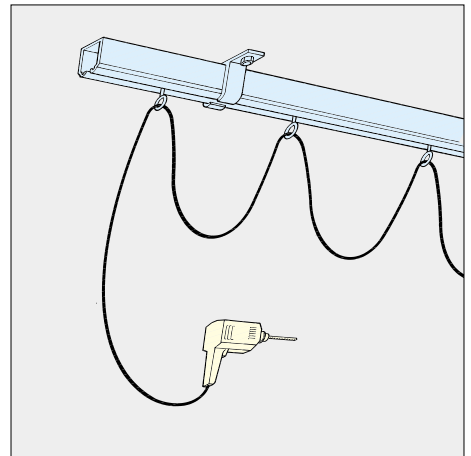
280 track is fitted direct to the structure, track and track curves are supplied pre-drilled.

Hangers: **280** **290**
 curtains 288H 58K/N
 cable carrier 56K/N

288H hanger and 58K/N hanger are supplied with 'S'hook.

58K/N is fitted with non-fouling rubber buffers to prevent fouling when bunching together.

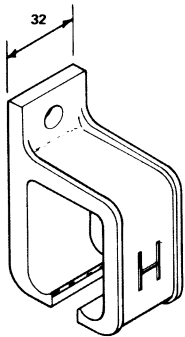
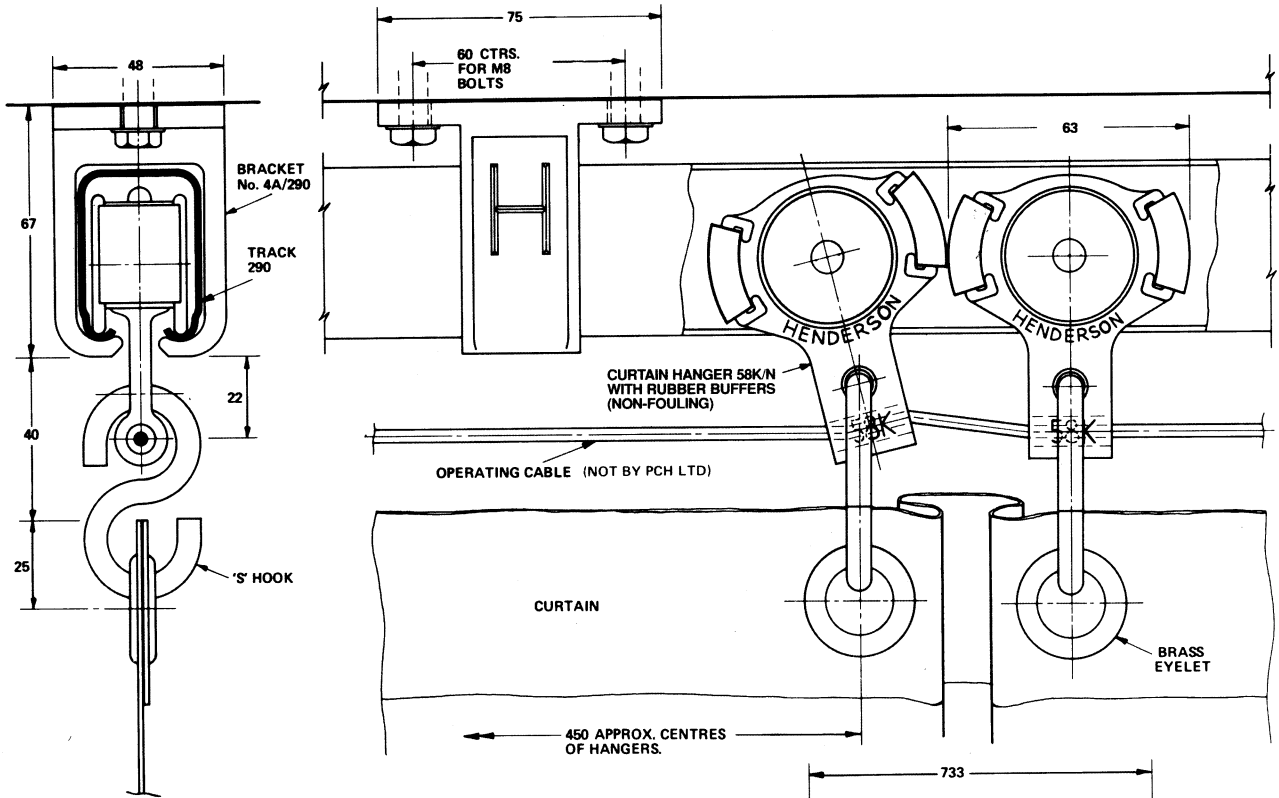
STRAIGHT AND CURVED TRACK SYSTEMS TOP HUNG



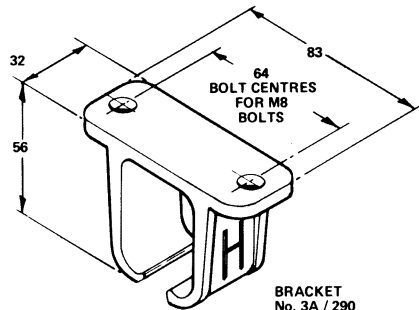
Standard Application

HENDERSON

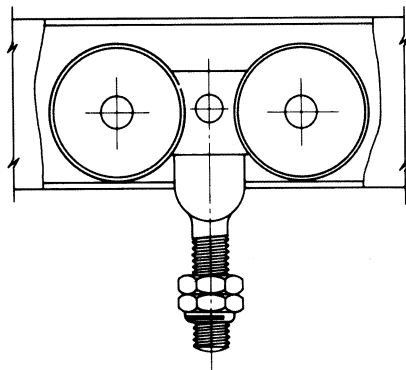
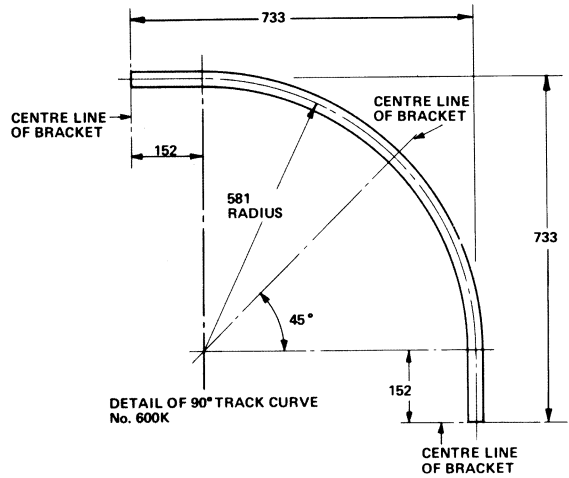
INDUSTRIAL CURTAIN CABLE CARRYING SYSTEMS



BRACKET No. 1A / 290



ALTERNATIVE BRACKETS



HANGER NO. 56K/N (CABLE CARRIER)