

**ENDFOLD
PARTITION
(Council)**

305

E A C H D O O R W E I G H T M A X 8 0 k g

**INTERNAL FOLDING DOORS
TOP HUNG
TIMBER DOORS**

APPLICATION

- ▶ Suitable for heavier residential and commercial folding partitions.
- ▶ Leaves can fold to one or both sides of the opening and can be stacked behind a reveal if required.
- ▶ To cover any width of opening, any number of folding units can be used.

DOOR SPECIFICATION

305

For individual leaves:

Max Leaf Height	4500mm
Max Leaf Weight	80 kg
Max Leaf Width	900mm
Leaf Thickness	44-57mm

Folding units of up to eight leaves can be hinged to post.

Floating units consist of four, six or eight leaves.

Access doors should be either a separate swing door or a wicket door in one of the folding leaves.

Instruction on leaf width calculation is provided with the Expert Service and Joinery Instruction 1839.

Clearance between leaves to be 2mm minimum.

Door leaves should be constructed to provide secure fixing for the hanger, hinges and guides and can either be flush, panelled or glazed.

GEAR SPECIFICATION

Track:	305 (3mm thickness)	
Material:	galvanised steel	
Standard lengths:	1800mm, 2000mm, 2500mm, 3000mm, 4000mm and 6000mm.	

Brackets:		
soffit fixing	3A/305	aluminium alloy pressure die casting
face fixing	1A/305	aluminium alloy pressure die casting
Brackets for special applications are available (see overleaf).		
Fix at 900mm centres (maximum).		
Fix additional bracket where folding units stack.		

Hangers:	21C/S	intermediate and end leaves
Hangers are fitted with steel wheels on maintenance free sealed for life precision ball bearings.		

Hinges:	403/3	butt hinge
On leaves up to 3000mm high fit 3 hinges, above 3000mm fit 4 hinges.		

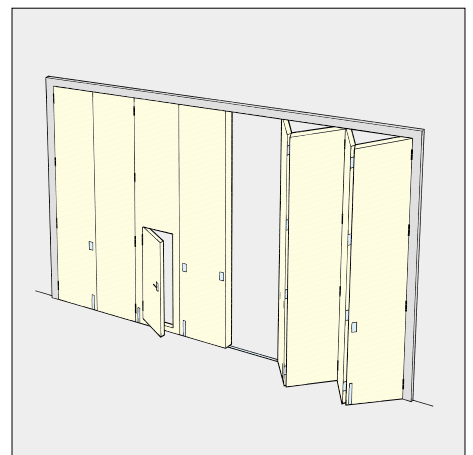
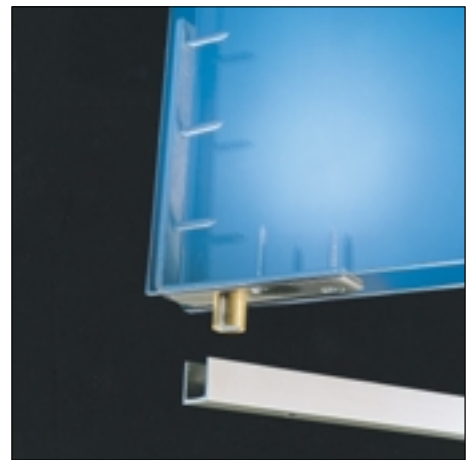
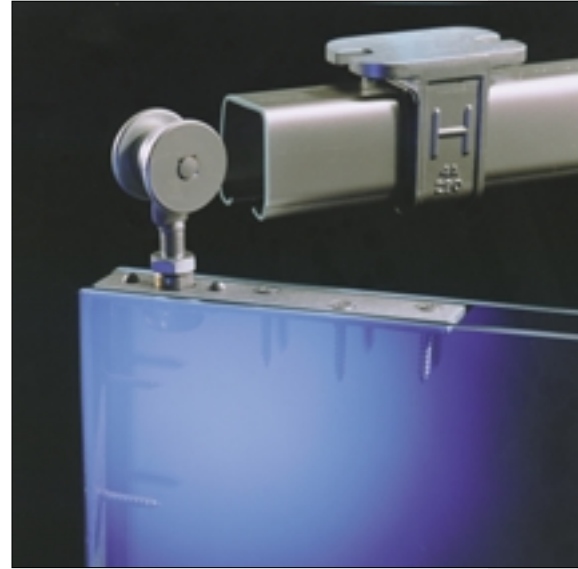
All steel parts to hangers and guides are electro-zinc plated.

Channel:	94X	aluminium
	94	brass

Standard lengths of aluminium channel correspond with standard track lengths. Standard lengths of brass channel are 1500mm and 3000mm.

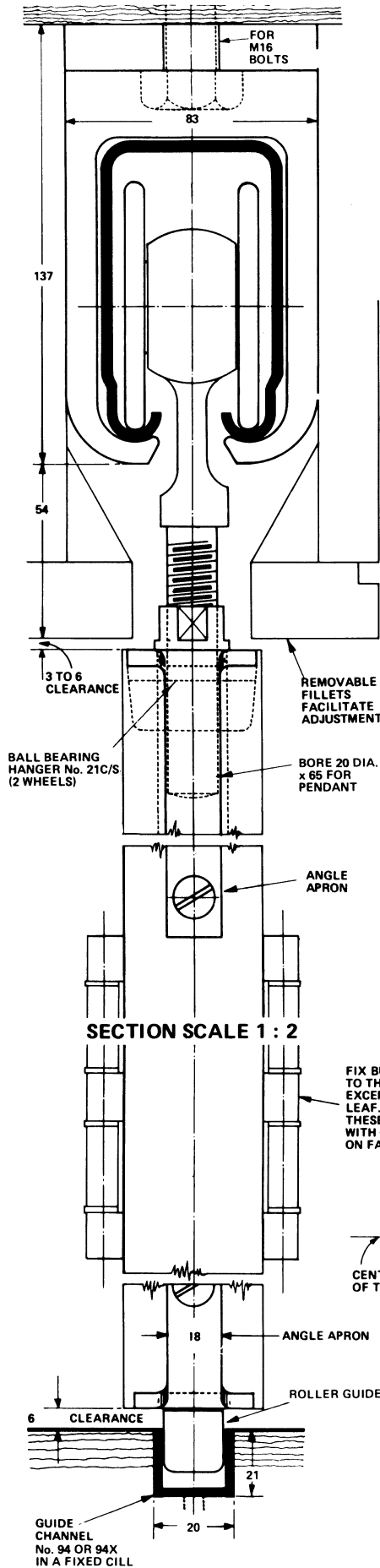
Pre-drilled and countersunk for wood or lugging into concrete.

Accessories:	Flush Pulls, Flush Bolts and Locks.
---------------------	-------------------------------------



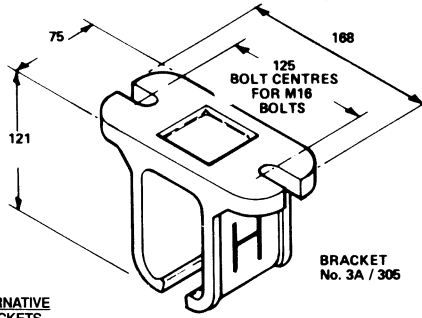
Standard Application

ENDFOLD PARTITION COUNCIL 305

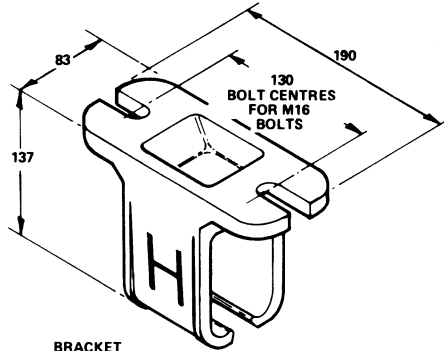


SECTION SCALE 1 : 2

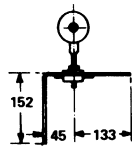
ALTERNATIVE BRACKETS



BRACKET No. 3A / 305



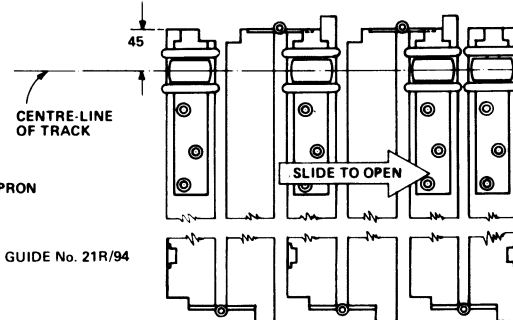
BRACKET No. 4A / 305



HANGER No. 21C/S

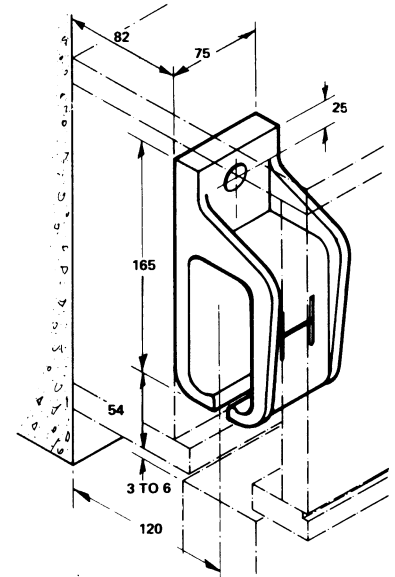
PARTITION ENDFOLD 301, 301H AND 305
WIDTH OF LEAVES
ALL ALIKE EXCEPT PIVOT LEAF HINGED TO POST,
WHICH MUST BE LESS BY HALF DOOR THICKNESS PLUS 45mm.
PLEASE REFER TO JOINERY AND INSTALLATION DETAIL PRIOR
TO CUTTING DOOR LEAVES.
LEAVES OF FLOATING UNITS ARE ALL OF EQUAL WIDTHS.
A FLOATING UNIT MUST BE 4, 6 OR 8 LEAVES.
MAXIMUM RECOMMENDED LEAF WIDTH IS 900mm.
CLEARANCE BETWEEN LEAVES SHOULD NOT BE LESS THAN 2mm.

FIX BUTTS 6 OFFSET
TO THE CENTRE OF PINTLE,
EXCEPT THOSE ON PIVOT
LEAF.
THESE MUST BE FIXED
WITH CENTRE OF PINTLE
ON FACE OF LEAF.

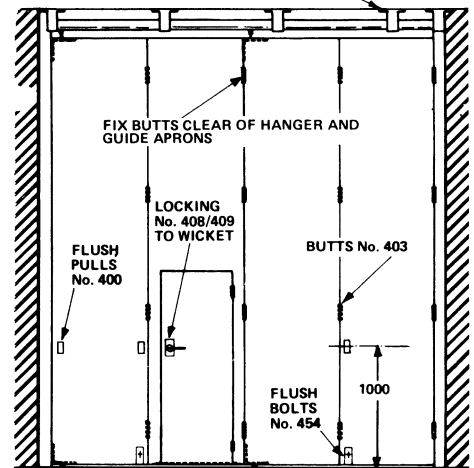


REBATED JOINTS
IF REBATING IS PREFERRED
IT MUST BE TO LAYOUT
ABOVE

DETAIL OF FIXING BRACKET
No. 1A/305 WHERE DOORS LAP
LINTOL OR ARE FOLDING OR
FLOATING BEHIND REVEAL.



EXTRA BRACKET TAKES
WEIGHT OF FOLDED DOORS



TYPICAL ELEVATION

