

# STRAIGHT SLIDING STERLING 3600/8000

EACH DOOR WEIGHT MAX 3600kg & 8000kg

## STRAIGHT SLIDING BOTTOM ROLLER HEAVY METAL FRAMED DOORS & GATES

### APPLICATION

- ▶ Sterling 3600 and 8000 gear is designed for very high and heavy straight sliding industrial doors.
- ▶ The bottom roller design allows the weight of the door to be taken at ground level.
- ▶ The Top Guide Channel (not by PC Henderson) is to be designed and incorporated within the building structure.
- ▶ Bottom rollers are designed for each individual application and are dependant on the thickness of the door.
- ▶ To cover any width of opening any number of doors can be used on single or multiple lines of track.
- ▶ To accommodate different building designs doors can slide to one or both sides of the opening.
- ▶ Wicket doors for easy access may be incorporated into a sliding door.
- ▶ Doors are manually operated via a mechanically operated drive unit and can be adapted for electrical operation.

### DOOR SPECIFICATION

	3600	8000
For individual doors:		
Max Door Height	12500mm	20000mm
Max Door Weight	3600 kg	8000 kg
Door Thickness	152mm minimum	152mm minimum

Door design must be carried out by an engineer and must take into consideration wind-loadings.

Doors generally should be constructed from rolled sectional channel and braced to prevent door twist.

The bottom rail must be set level and may be recessed for protection from traffic.

### GEAR SPECIFICATION

	3600	8000
<b>Top Guide Channel:</b>		
The Top Guide channel should be fabricated from rolled steel section which is incorporated within the building structure.		

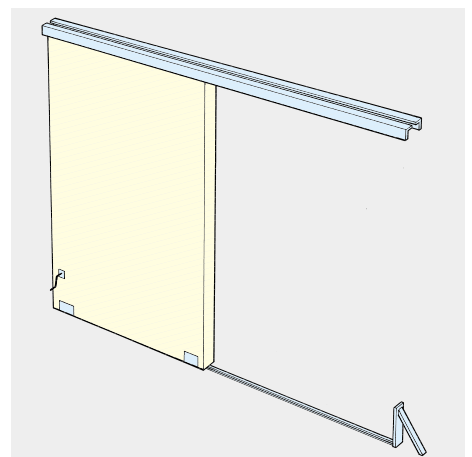
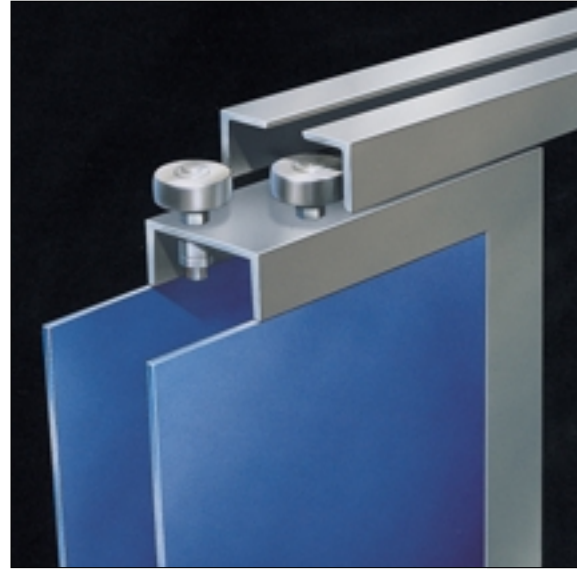
**Top Guide Rollers (4 per door):** 104S 104S  
 Top Guide Rollers are available in 125, 175 and 200mm diameters to suit respective door heights: 7000mm, 12500mm and 20000mm.  
 Top Guide Rollers are steel zinc plated.

**Bottom Rollers (2 per door):**

Gear operated	3600GO	8000GO
Idler	3600IR	8000IR

To enable manual operation, gear operated bottom rollers must be used in conjunction with mechanically operated drive unit and crank handle.

**Bottom Rail:** 297 297  
 Heavy steel section available in standard lengths of 2700mm.



Standard Application

# STRAIGHT SLIDING STERLING 3600/8000

