

STRAIGHT SLIDING 307

EACH DOOR WEIGHT MAX 2000Kg

APPLICATION

- ▶ Designed to allow very heavy and large industrial doors to be easily moved.
- ▶ To cover any width of opening, any number of doors can be used on single or multiple lines of track.
- ▶ To accommodate different building designs, doors can slide to one or both sides.
- ▶ A wicket door for easy access may be incorporated into a sliding door.
- ▶ Where doors are fitted externally, a canopy is recommended.

DOOR SPECIFICATION

Track 307

For individual doors:

Max Door Height 6000mm

Max Door Weight Steel Hanger 2000 kg

Door Thickness 60-70mm

For ease of operation it is recommended that the door width should not exceed 75% of door height.

Timber doors for industrial applications should be framed, ledged and braced.

Metal doors should be constructed of channel or angle framing, well braced and clad with flat or corrugated sheets.

GEAR SPECIFICATION

Track: 307 (5mm thickness)
Material: steel zinc plated
Standard lengths: 2000mm, 2500 mm and 3000mm,

Brackets:-

For single track (face fixing)	1/307S	pressed steel zinc plated
For double track (face fixing)	5/307S	pressed steel zinc plated
For single track (soffit fixing)	3/307S	pressed steel zinc plated

Fix at every 900mm centres (maximum).

Hangers 2 per door:-

Wood Doors - apron fixing	53FJ/S
Metal Doors - angle frame	56FJ/S
Metal Doors - box frame	56FJ/S

Hangers are fitted with steel wheels on maintenance free sealed for life precision ball bearings. Vertical adjustment is simple and positive.

Guides 2 per door:-

Wood Doors	102/97
Wood Doors - concealed fixing	106R/97
Metal Doors - angle frame	104P/97
Metal Doors - box frame	104PX/97

All steel parts are electro-zinc plated.

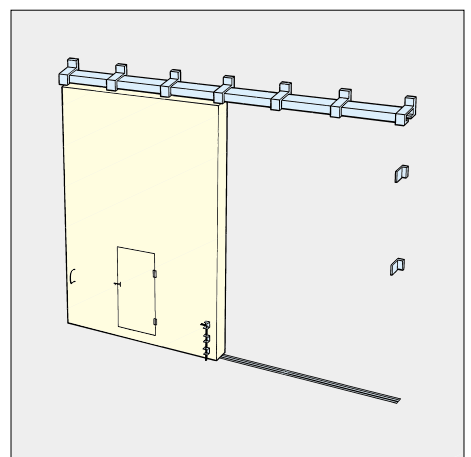
Channel: 97 galvanised steel

Standard lengths correspond with standard track lengths.

Pre-drilled for lugging into concrete and for use with drainage funnel.

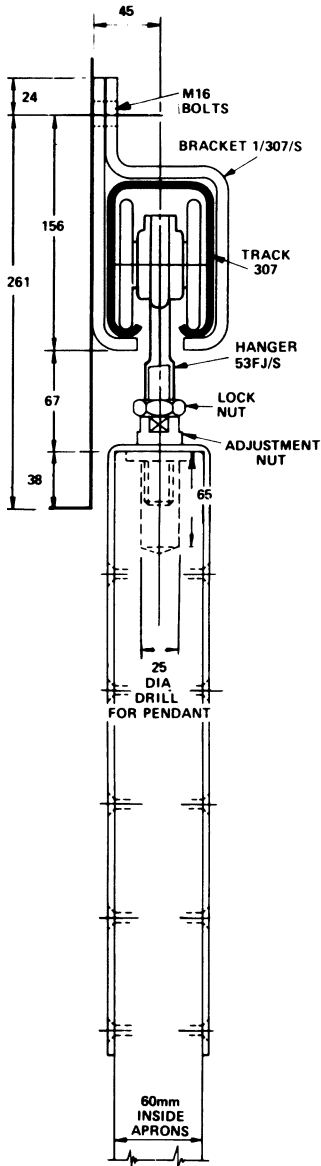
Accessories: Bow Handles, Flush Pulls, Bolts and Locks.

STRAIGHT SLIDING TOP HUNG TIMBER OR METAL DOORS

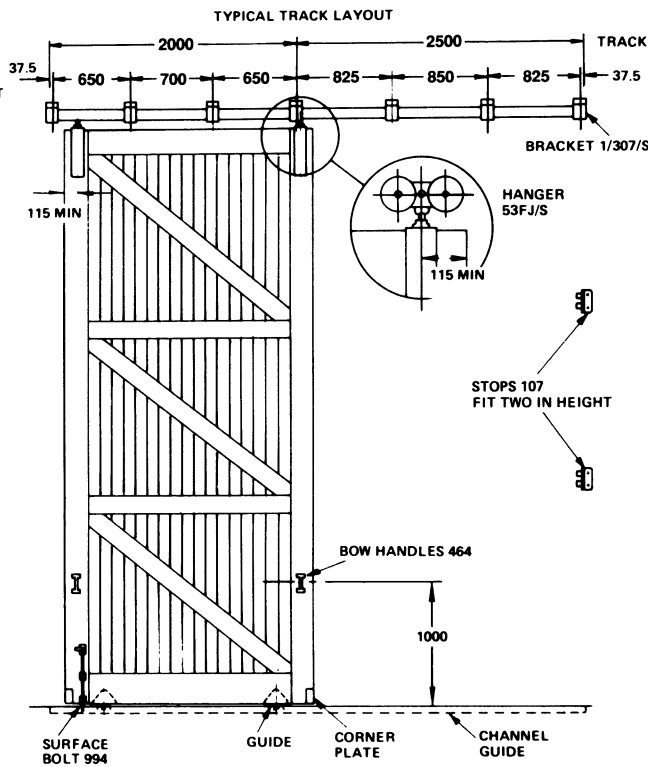
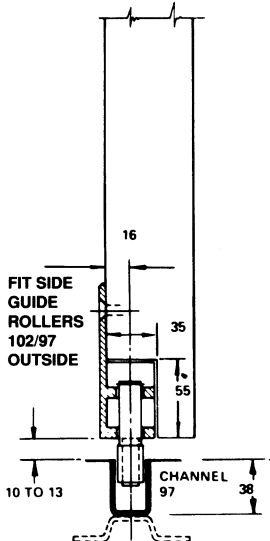


Standard Application

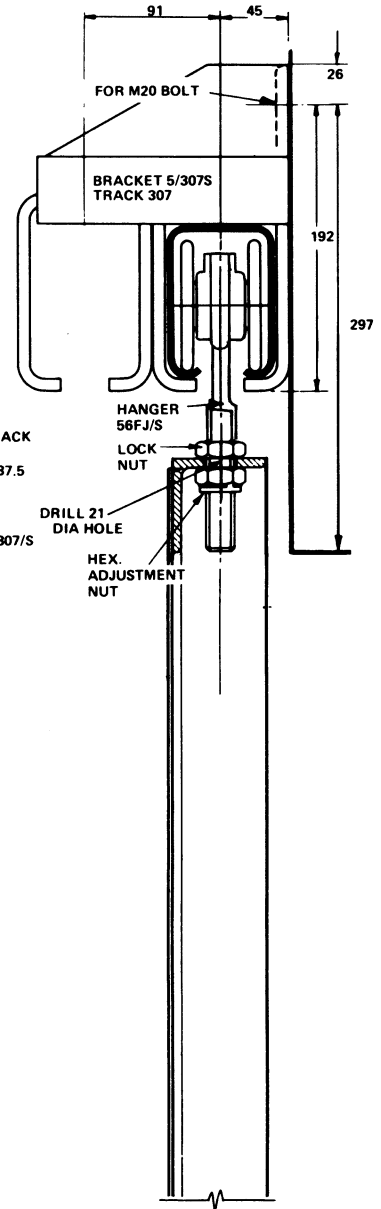
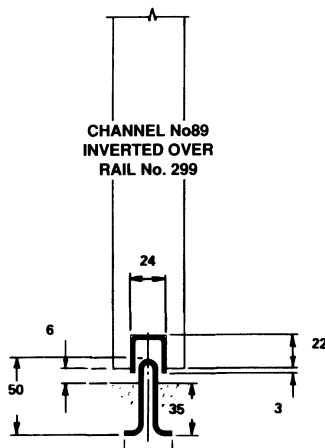
STRAIGHT SLIDING 307



SECTION SCALE
1 : 5



STANDARD TRACK LENGTH	2000	2500	3000
NORMAL BRACKET SPACING	700	800	750
FOR HEAVY DOORS, OR THOSE SUBJECTED TO ABNORMAL USE, BRACKET CENTRES SHOULD BE REDUCED BY USING ONE EXTRA BRACKET PER TRACK LENGTH.			



SECTION SCALE
1 : 5

