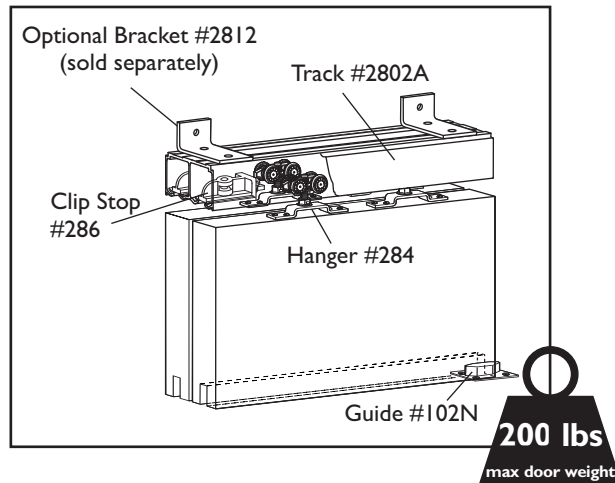


Bypass Track Series Installation Instructions

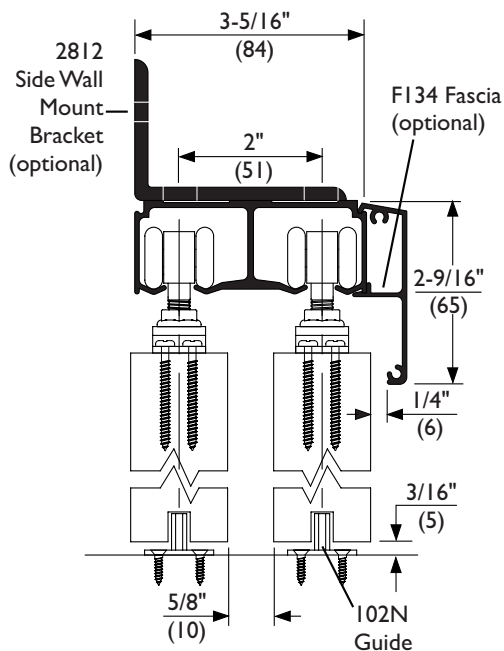
800-824-3018 • www.pemko.com

Door Leaf Capacity - Up to 200 lbs.

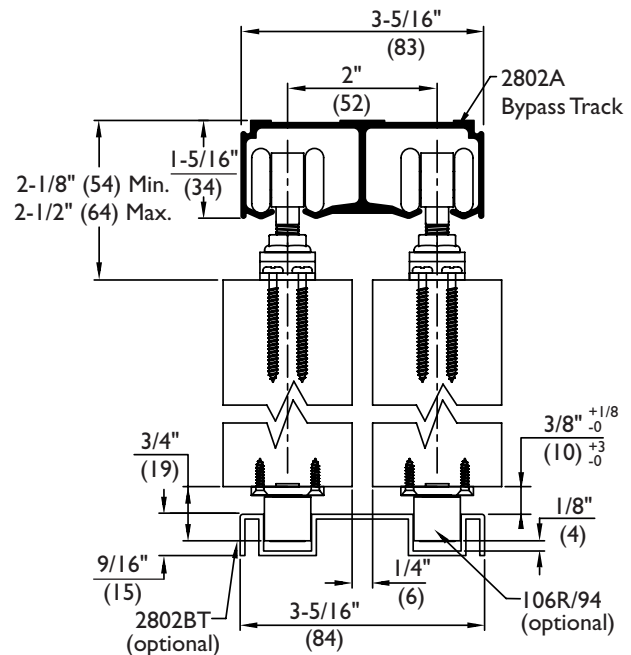


Kit No.	Track Length	Door Width
HBP200A/4	48"	2 @ 24"
HBP200A/5'4	64"	2 @ 32"
HBP200A/6	72"	2 @ 36"
HBP200A/7	84"	2 @ 42"
HBP200A/8	96"	2 @ 48"
HBP200A/10	120"	2 @ 60"
HBP200A/12	144"	2 @ 72"

1-3/8" Thick Doors Side Wall Mount

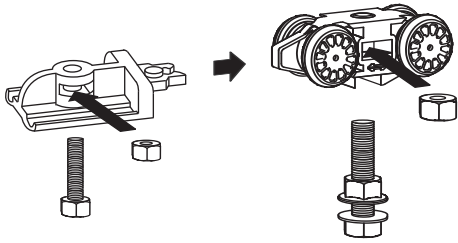


1-3/4" Thick Doors Overhead Mount

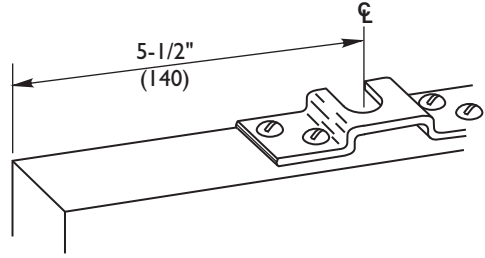


INSTALLATION INSTRUCTIONS

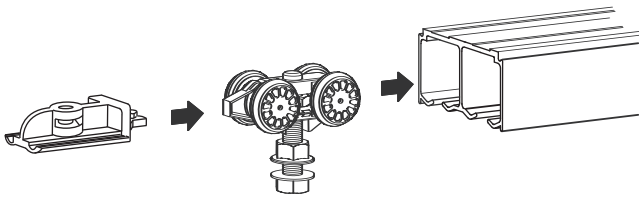
1 Assemble hangers and retaining stops.



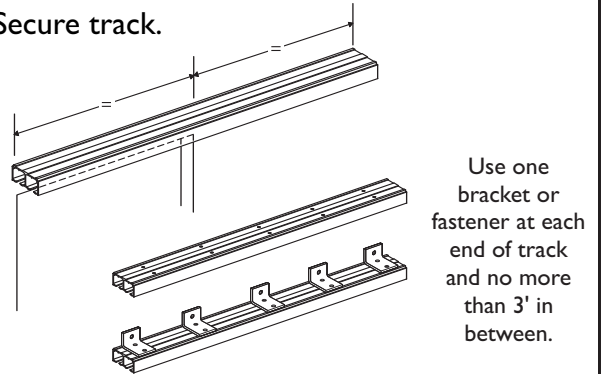
2 Fit hanger apron to door panel.



3 Insert hangers and retaining stops.

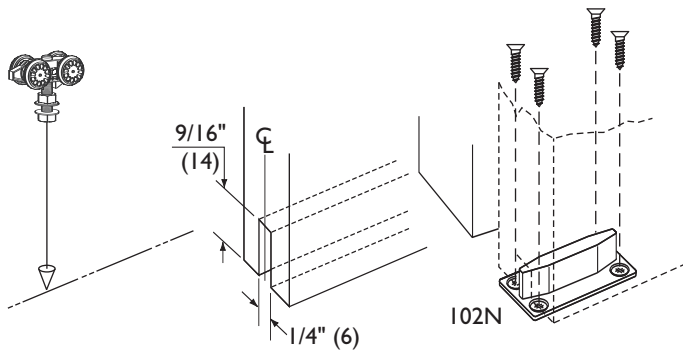


4 Secure track.

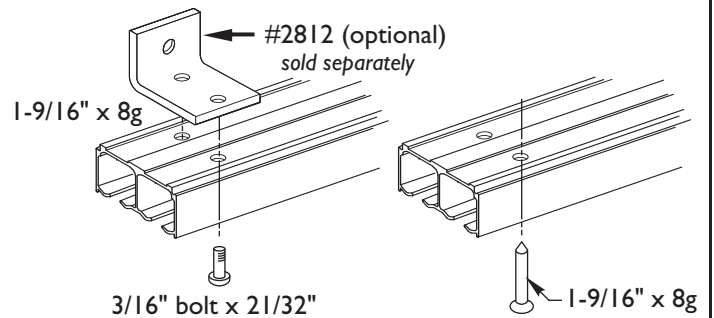


5 Mortise doors and fit door guides.

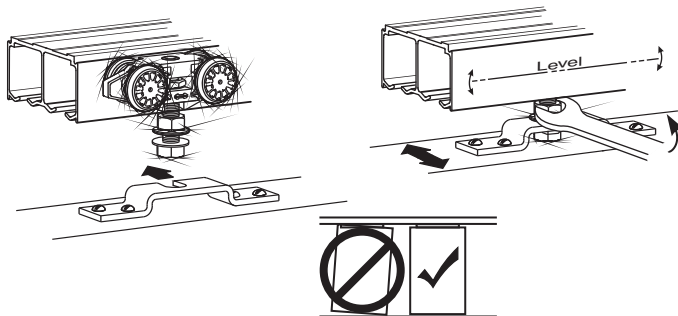
Attach a plumb line to hanger. Place hanger inside track. Using plumb line, mark the centerline of floor channel for each door.



6 Face & Soffit Fix Options



7 Attach door panel and adjust until level.



8 Position and secure retaining stops.

