

ASSA ABLOY, the global leader
in door opening solutions

PEMKO Catalog

Sliding & Folding Hardware

About PEMKO:

PEMKO manufactures an extensive range of quality products for many applications. This catalog is focused on Sliding and Folding Hardware. There are many products manufactured by PEMKO that are not included in this catalog. Please visit our website www.pemko.com to view PEMKO's complete product line. Call PEMKO Customer Service at 1-800-824-3018 for additional information and technical service.

SLIDING & FOLDING HARDWARE

Sliding & Folding Hardware allows space previously required for swing clearance can now be better utilized for decor or to give a more open feel.

PEMKO is the North American distributor for sliding and folding door hardware manufactured by P.C. Henderson. PEMKO has created hardware solution kits with all the components needed to complete a project, except for the actual door. The warranty on P.C. Henderson products is 2 years.

PEMKO also provides several solution kits of its own including the Pocket Frame Kit, Side Wall Track System, Bypass Track System H180, and SHS80. The warranty on PEMKO manufactured products is 5 years.

Select your solution kit based on the door weight, size, mounting (overhead or side wall), sliding or folding, and any special characteristics of the particular opening such as the need for a low profile system. Sliding Kits are offered for doors weighing 180 lbs up to 1100 lbs. Folding Kits are offered for doors weighing up to 275 lbs each.

Sliding & Folding Hardware Cross Reference Chart

	PEMKO	HAGER	GRANT - HETTICH	JOHNSON	HAFELE
Four Panel Folding Door	HF4/100/_ , HF4/100A/_	9570, 9100	1500, 1600	100FD, 111FD, 1700	HAWA FOLDING
Sliding Panel, up to 200 lbs	H200A_	C-103-4 & C-104	6013, 6023, 6053, 71-034, 71-111, 7-034, 7-138, 71-222, 1210, 5150	2800	HAWA JUNIOR
Bypass Track	HBP200A/_	9602, 9603	6034, 6064, 72-034, 72-118, 72-222, 72-134, 72-138, 6065, 73-134, 73-138, 73-034	1166, 1138, 2200, 100SD, 111SD	N/A
Side Wall Track	280_-SWTKIT/_	N/A	N/A	2610	N/A
Sliding Panel, up to 180 lbs	H180A/_	N/A	N/A	N/A	HAWA MEDIA
Pocket Frame Kit	PF28200A_____	9628, 9629, 9630, 9631	N/A	100-111, 1560, 2711	HAWA JUNIOR POCKET FRAME KIT
Sliding Hardware Pack	H100/200PACK	9814, 9540, 9575	6013, 6330, 6360, 7000, 1202	1166, 1138, 2200, 10311	407.14.903, 407.65.035, 940.40.012, 942.17.012

Sales & Support

Customer Service Representatives are available from 7am to 7pm Central time at 1-800-824-3018 or visit the website for the current catalogs, sell sheets, and the most up-to-date templates.

Need a Sales Rep?

For representation information in Washington State, Alaska, Oregon, Northern California, Northern Nevada, and Hawaii, please visit www.pemko.com to locate and view the sales contact for your area or call PEMKO Customer Service at 1-800-824-3018.

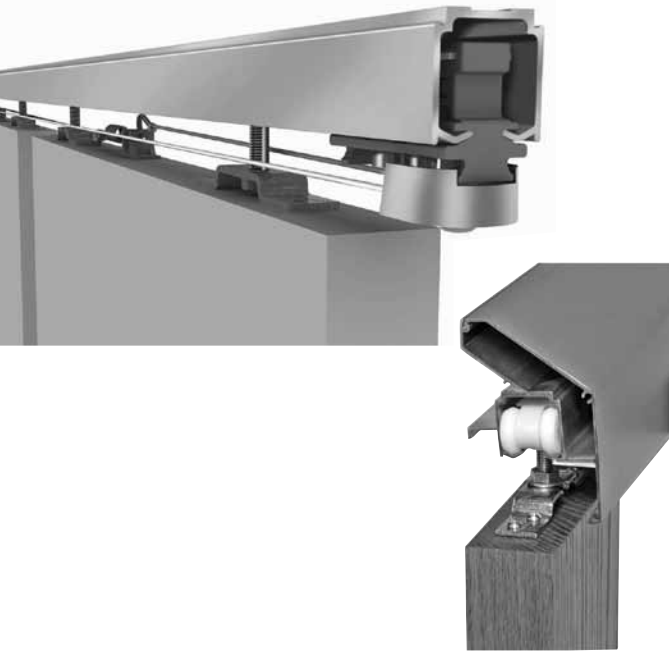
PEMKO is largely represented by the ASSA ABLOY Door Security Solutions team (except, WA, AK, OR, N CA, N NV, HI) Contact your local ASSA ABLOY Door Security Solution Representative via e-mail by going to www.assaabloydss.com and clicking on "Sales Support" or call 1-800-DSS-EZ4U (800-377-3948).

Website: www.pemko.com

Facebook: www.facebook.com/pemkomfg

Twitter: <http://twitter.com/#!/PemkoMfg>

PEMKO has manufacturing and warehouse locations in Memphis TN and Ventura CA as well as warehouse locations in Toronto ON and Vancouver BC.



CONTENTS:

H180A Series	SF-2
SHS80 Series	SF-3
Sliding 200 Series	SF-4
Side Wall Track System	SF-5
Bypass Track Series	SF-6
SIM200A Series	SF-7
LP200 Series	SF-8
Sirocco Series	SF-9
H300S-OH Series	SF-10
H300S-SW Series	SF-11
H440A-OH Series	SF-12
H440A-SW Series	SF-13
H600S-OH Series	SF-14
H600S-SW Series	SF-15
H800S-OH Series	SF-16
H800S-SW Series	SF-17
H1100A-OH Series	SF-18
H1100A-SW Series	SF-19
Sliding Glass Series	SF-20
Pocket Frame Kit	SF-21
Folding 100 Series	SF-22
Pacer Interior End Fold Series	SF-23
Flexirol Interior End Fold Series	SF-24
Options & Accessories	SF-25

INDEX:

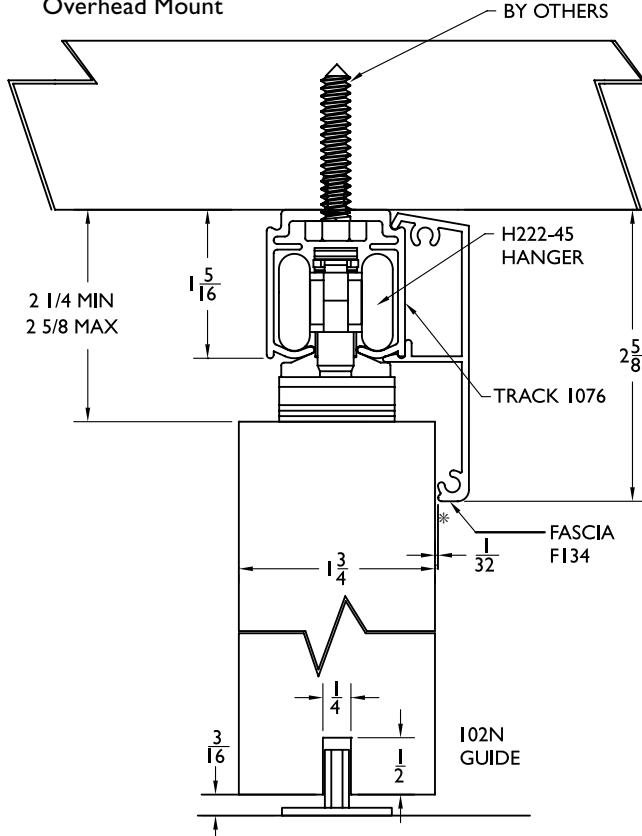
<u>PRODUCT</u>	<u>PAGE</u>	<u>PRODUCT</u>	<u>PAGE</u>	<u>PRODUCT</u>	<u>PAGE</u>	<u>PRODUCT</u>	<u>PAGE</u>	<u>PRODUCT</u>	<u>PAGE</u>
280.....	SF-14	1A/301/EC.....	SF-14, SF-17	403/2.....	SF-23, SF-24	F200C.....	SF-13	LH100	SF-8
281.....	SF-3, SF-4, SF-17, SF-20, SF-22	1A/550.....	SF-19	550A.....	SF-18, SF-19, SF-24	F200ECP.....	SF-13	LP200A.....	SF-8
283.....	SF-22	1B.....	SF-13	556/21.....	SF-24	FIF2/275A.....	SF-24	PF134 KIT.....	SF-21
284.....	SF-4, SF-7	21/550/P.....	SF-24	556/57.....	SF-18, SF-19	H100/200 Pack.....	SF-4, SF-6	PF28200A.....	SF-21
286.....	SF-4, SF-6	21B/P.....	SF-23	57A/N.....	SF-16, SF-27	H1100A-OH.....	SF-18	PFAS.....	SF-21
290.....	SF-10, SF-11	21BO/4.....	SF-23	57A/S.....	SF-14, SF-15	H1100A-SW.....	SF-19	PFAS100.....	SF-21
301.....	SF-14, SF-17	21N/94.....	SF-23	57B.....	SF-12, SF-13	H180A.....	SF-2	PFAS88.....	SF-21
608.....	SF-20	21R/94.....	SF-24	57K/N.....	SF-10, SF-11	H200A.....	SF-4	PFBG-4.....	SF-21
610.....	SF-20	280_-SWF.....	SF-5	600A.....	SF-12, SF-13, SF-23	H222-45.....	SF-2, SF-3, SF-21	PFBG-8.....	SF-21
2812.....	SF-6	280_-SWT.....	SF-5	601H.....	SF-3, SF-7, SF-20	H300S-OH.....	SF-10	PFBS.....	SF-21
102N, SF-2-SF-8, SF-10-SF-17		2802A.....	SF-6	601P.....	SF-12, SF-13	H300S-SW.....	SF-11	PFCDKIT.....	SF-21
102WA.....	SF-2, SF-7, SF-11, SF-13, SF-17	2802BT.....	SF-6	8/10/75 HUSKY.....	SF-20	H440A-OH.....	SF-12	PFFC-8.....	SF-21
102WN.....	SF-2, SF-5, SF-7, SF-11, SF-13, SF-15, SF-17	280A.....	SF-3, SF-4, SF-7, SF-9, SF-20, SF-22	89/2N.....	SF-10, SF-19	H440A-SW.....	SF-13	PFFB-1.....	SF-21
106HF/94.....	SF-22	280AN.....	SF-8	94A.....	SF-2, SF-8, SF-10, SF-13, SF-19, SF-22, SF-24	H600S-OH.....	SF-14	PFFB-2.....	SF-21
106R/94.....	SF-3-, SF-8, SF-10-SF-19	280C-SWTKIT.....	SF-5	971A.....	SF-3, SF-4, SF-7, SF-8, SF-10, SF-12, SF-14, SF-16, SF-18, SF-20, SF-22, SF-24	H600S-SW.....	SF-15	PFFS.....	SF-21
1075C.....	SF-2	280D-SWTKIT.....	SF-5	DELLH.....	SF-9	H800S-OH.....	SF-16	PFKIT-4.....	SF-21
1076A.....	SF-2	281A.....	SF-8	DELRH.....	SF-9	H800S-SW.....	SF-17	PFKIT-8.....	SF-21
1A/290.....	SF-11	282HD.....	SF-22	F134.....	SF-6	HBP200A.....	SF-6	PIF2/165A.....	SF-23
1A/290/EC.....	SF-10, SF-11	284D.....	SF-20	F134C.....	SF-2, SF-4, SF-7	HF2/100A.....	SF-22	PIF4/165A.....	SF-23
1A/301.....	SF-15, SF-17	287HD.....	SF-2, SF-4, SF-6	F136.....	SF-20	HF4/100A.....	SF-22	SHS80.....	SF-3
		289B.....	SF-22	F160C.....	SF-12	HH3/290.....	SF-10, SF-11	SIM100.....	SF-7
		289T.....	SF-22	F160ECP.....	SF-12	HH3/301.....	SF-14, SF-19	SIM200A.....	SF-7
		3A/290.....	SF-10			K1077C-SWEP.....	SF-2	SIRF/2500.....	SF-9
		3A/301.....	SF-14, SF-16			K134EP.....	SF-4, SF-7	SIRLH.....	SF-9
						K28_-SWEP.....	SF-5	SIRRH.....	SF-9

H180A Series

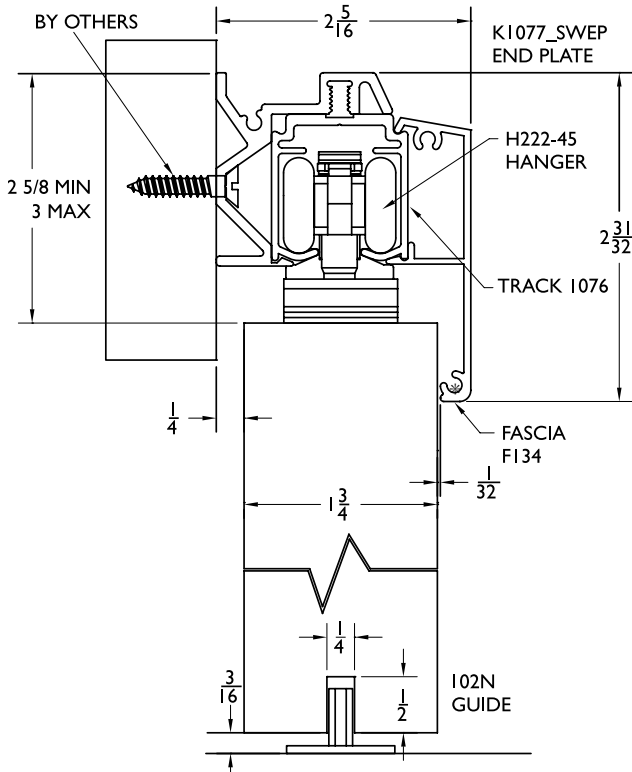
For Sliding Panels up to 180 lbs.

Manufactured by PEMKO

Overhead Mount



Side Wall Mount



Configurations: Installations:

- Single
- Bi-parting
- Overhead Mount
- Side Wall Mount

Features:

- Hanger body is made of nickel plated zinc alloy for durability and long life
- Zinc alloy ball bearing wheels coated in nylon for smooth operation
- 180 lb. panel capacity
- Optional side wall bracket reduces the amount of wall space needed to mount the track

H180A Kits Include:

- 1 ea **1076A** Mill Finished Aluminum Track
- 2 ea **H222-45** Hanger - Nickel Plated Zinc Alloy Body
Zinc Alloy Wheels Coated in Nylon
- 2 ea **287HD** Rubber Bumper In-Track Stop
- 1 ea **102N** White Nylon Mortise Guide

Standard Kit Sizes

Part Number	Material	Track Length	Door Width
H180A/6	Aluminum	72"	36"
H180A/8	Aluminum	96"	48"
H180A/10	Aluminum	120"	60"
H180A/12	Aluminum	144"	72"

Options: See page SF-25

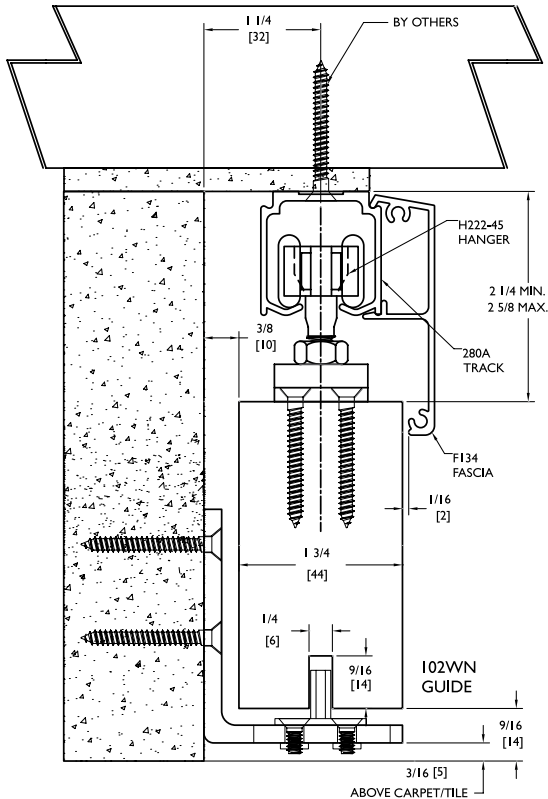
- Fascia **F134C**
- Side Wall Track Bracket **1075C** Clear anodized aluminum bracket- order same length as track
- End Plate Kit **K1077C-SWEP** (Use with F134C Fascia and 1075C Side Wall Bracket only)
- Bottom Channel **94A**
- Roller Guide **106R/94**
- Threshold **971A**
- Side Wall Mount **102WN** (nylon) and **102WA** (steel)
- Mortise Guides

* When using fascia, offset hanger foot 1/8" closer to fascia face of the door.

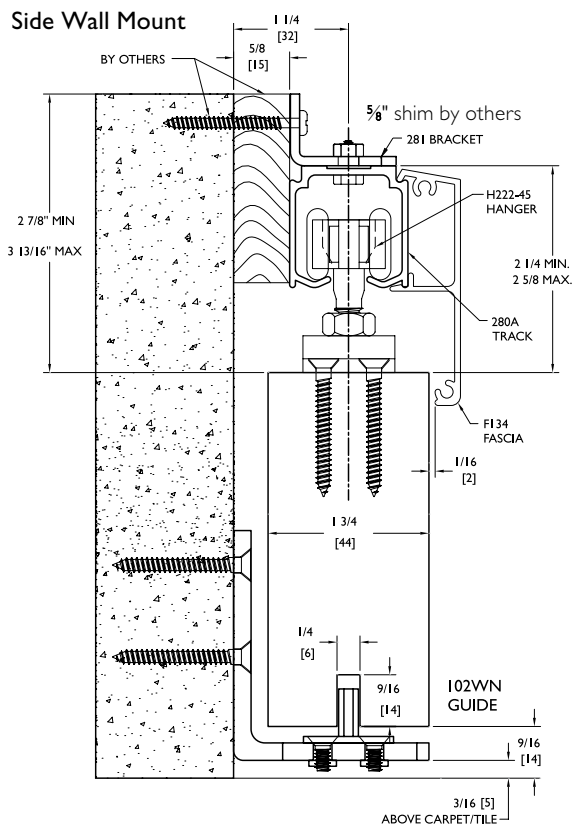
SHS80 Series

For Sliding Panels up to 180 lbs.
Manufactured by PEMKO

Overhead Mount



Side Wall Mount



Configurations: Installations:

- Single
- Bi-parting
- Overhead Mount
- Side Wall Mount

Features:

- Hanger body is made of nickel plated zinc alloy for durability and long life
- Zinc alloy ball bearing wheels coated in nylon for smooth operation
- 180 lb. panel capacity

SHS80 Kits Include:

- 1 ea 280A Mill Finished Aluminum Track
- 2 ea H222-45 Hanger - Nickel Plated Zinc Alloy Body
- 2 ea 601H Nylon In-Track Clip Stop
- 1 ea 102WN White Nylon Mortise Guide on Zinc Plated Steel "L" Metal

Standard Kit Sizes			
Part Number	Material	Track Length	Door Width
SHS80/6	Aluminum	72"	36"
SHS80/8	Aluminum	96"	48"

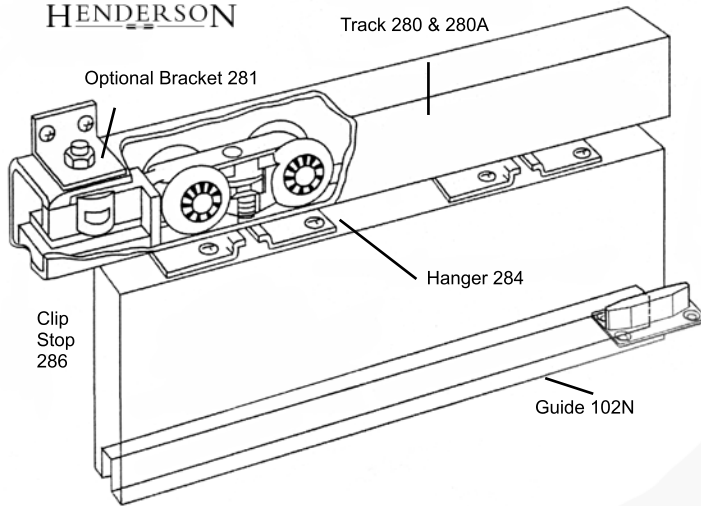
Options: See page SF-25

- Fascia **F134C**
- Side Wall Track Brackets **281** available as 5 pack only, 2815
Note: Need one at each end and no more than 3 feet in between.
Fasteners included
- Bottom Channel **94A**
- Roller Guide **106R/94**
- Threshold **971A**
- Side Wall Mount **102WA**
- Mortise Guides **102N**
- Mortise Floor Guide **102N**

Sliding 200 Series

For Sliding Panels up to 200 lbs.
Manufactured by P.C. Henderson

HENDERSON



Configurations: Installations:

- Single
- Bi-parting
- Overhead Mount
- Side Wall Mount
- Face/Face Fixed Mount with Fascia

Features:

- Needle bearing hangers for smooth operation
- 200 lb. panel capacity
- Galvanized steel track 280
- Aluminum track 280A

H200A Kits Include:

- 1 ea 280A Aluminum Track
- 2 ea 284 Hangers
- 1 ea 102N Nylon Guide
- 2 ea 286 Stops
- 1 ea Adjusting Wrench and Mounting Hardware

H200 Kits Include:

- 1 ea 280 Steel Track
- 2 ea 284 Hangers
- 1 ea 102N Nylon Guide
- 2 ea 286 Stops
- 1 ea Adjusting Wrench and Mounting Hardware

Options: See page SF-25

Hardware Kit
Mounting Bracket

H100/200 PACK

281 available as 5 pack only, 2815
Note: Need one at each end and no more than 3 feet in between.
Fasteners included

Track Stop (bumper)
Bottom Channel
Fascia, Snap-On
Roller Guide
Side Wall Mortise Guide
Threshold
End Plate

287HD

94A

F134C in clear anodized (280A only)

106R/94

102WA (steel) and 102WN (nylon)

971A

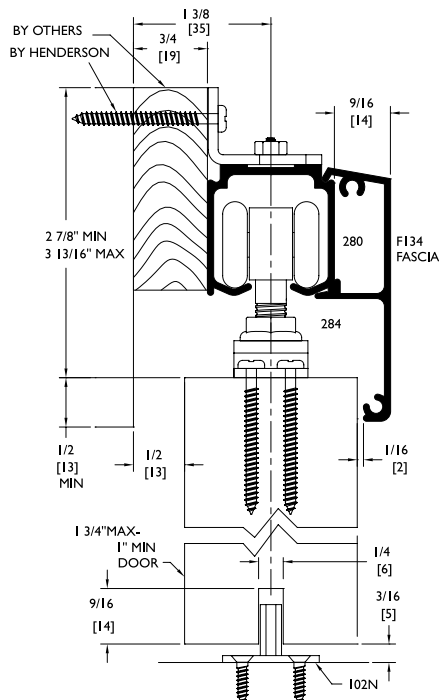
K134EP (Use with F134C and 280A only)

Standard Kit Sizes

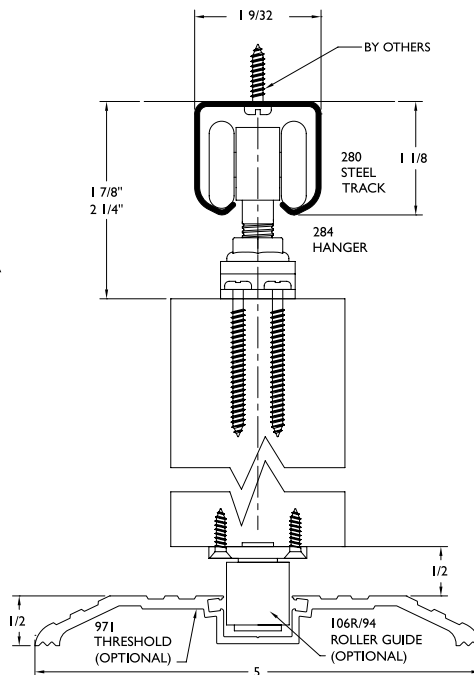
Part Number	Material	Track Length	Door Width
H200A/4	Aluminum	48"	24"
H200A/5'4	Aluminum	64"	32"
H200A/6	Aluminum	72"	36"
H200A/7	Aluminum	84"	42"
H200A/8	Aluminum	96"	48"
H200A/10	Aluminum	120"	60"
H200A/12	Aluminum	144"	72"
H200/6	Steel	72"	36"
H200/8	Steel	96"	48"

280A Side Wall Mounted

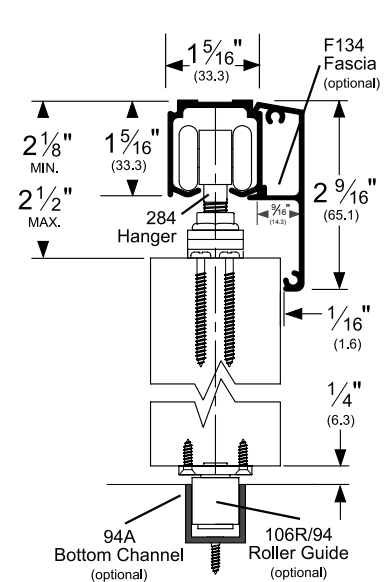
3/4" shim by others



280 Overhead Mounted



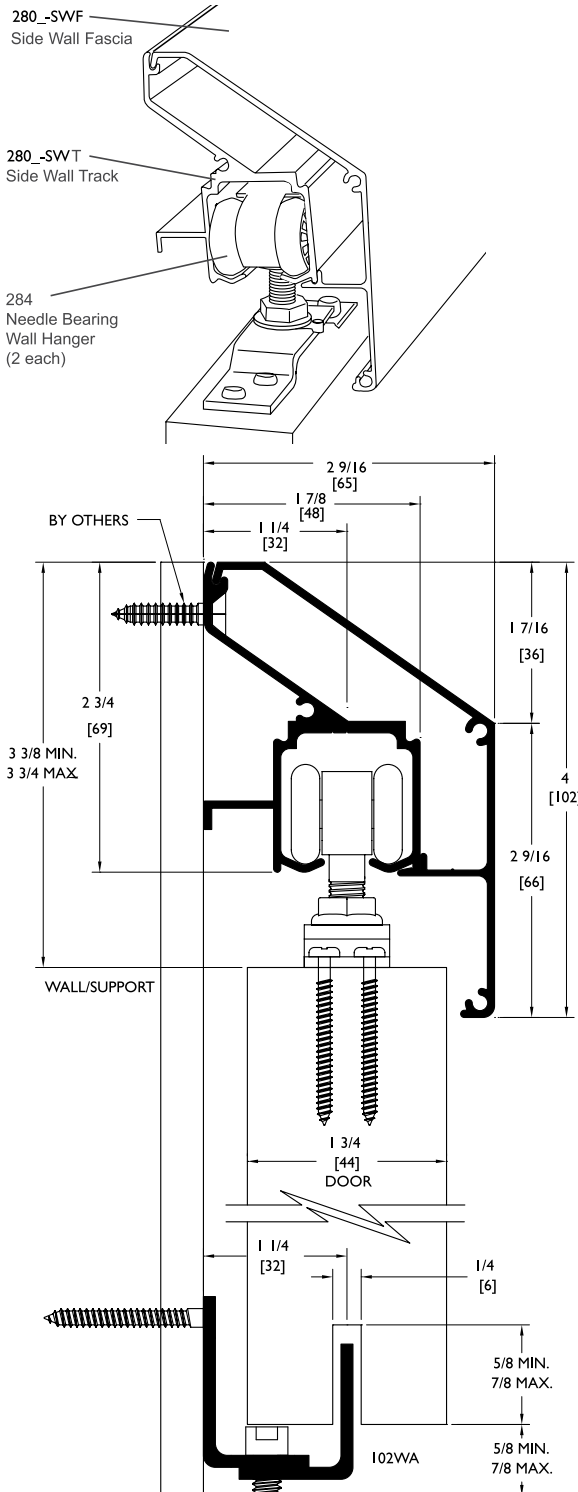
280A Soffit Mounted with Fascia



Side Wall Track (SWT) System

Manufactured by PEMKO

The PEMKO Side Wall Track System has a unique mounting bracket that is extruded with the track. An innovative wall mounted bottom guide assembly allows carpet to be replaced without removing the door.



Configurations:

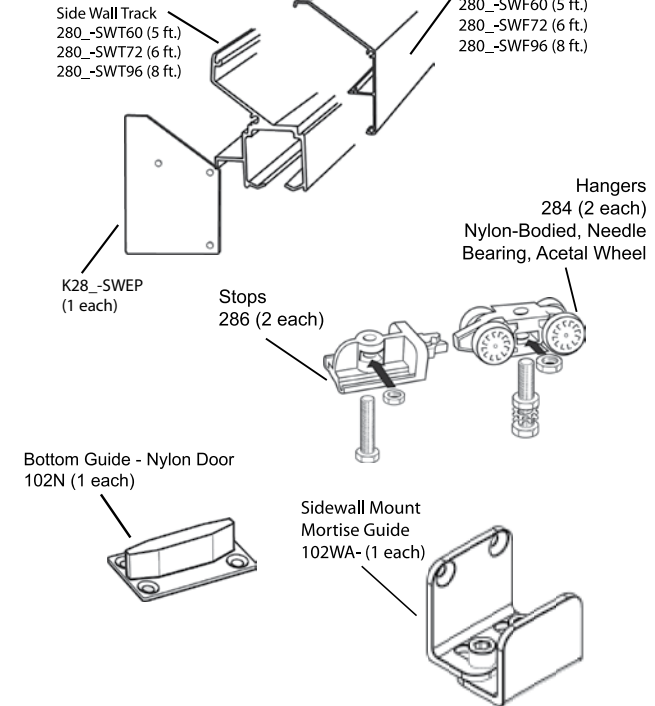
- Single
- Bi-parting

Features:

- Unique mounting bracket extruded into track
- Supports up to 200 lbs per door
- Quick, easy attachment
- No additional shims needed
- New construction or retrofit

280SWT Kits

Include:



Standard Kit Sizes

Part Number	Track Length	Door Width
(Mill Finished Track/Clear Anodized Fascia/End Plates)		
280C-SWTKIT/5	60"	30"
280C-SWTKIT/6	72"	36"
280C-SWTKIT/8	96"	48"
280C-SWTKIT/12*	144"	2 @ 36"
(Dark Bronze Anodized Track/Fascia/End Plates)		
280D-SWTKIT/5	60"	30"
280D-SWTKIT/6	72"	36"
280D-SWTKIT/8	96"	48"
280D-SWTKIT/12*	144"	2 @ 36"

*NOTE: 280_SWTKIT/12 comes with enough hardware for two doors.

Options: See page SF-25

- Hardware Kit (one door) **H100/200 pack**
- Roller Guide **106R/94**
- Bottom Channel **94A**
- Nylon Mortise Guide **102WN**

AVAILABLE FINISHES FOR PRODUCTS SHOWN ON THIS PAGE (see General Information section for finish chart)
A (Mill Finish Aluminum) C (Anodized Aluminum) D (Dark Bronze Anodized)

Bypass Track Series

For Bypass Panels up to 200 lbs.
Manufactured by PEMKO

- Fits 1 $\frac{3}{8}$ " and 1 $\frac{3}{4}$ " doors
- Needle-bearing wheels for ultra smooth performance
- Load capacity 200 lbs. per door panel (2 hangers)
- Extruded aluminum track

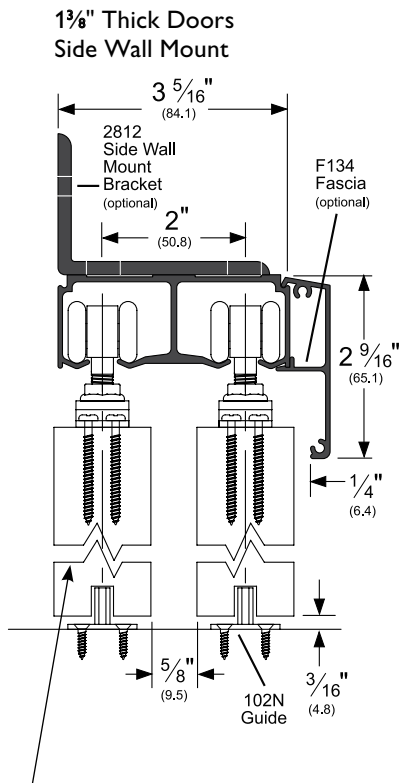
HBP200A Kits Include:

- 1 ea 2802A Mill Finished Aluminum Track
- 4 ea 284 White Hangers
- 2 ea 102N White Nylon Mortise Guide
- 4 ea 286 Stops
- 1 ea Adjusting Wrench and Mounting Hardware

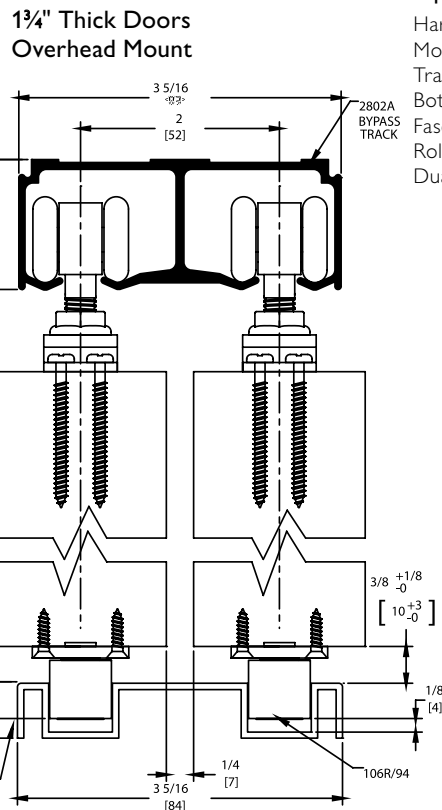


Standard Kit Sizes		
Part Number	Track Length	Door Width
HBP200A/4	48"	2 @ 24"
HBP200A/5'4	64"	2 @ 32"
HBP200A/6	72"	2 @ 36"
HBP200A/7	84"	2 @ 42"
HBP200A/8	96"	2 @ 48"
HBP200A/10	120"	2 @ 60"
HBP200A/12	144"	2 @ 72"

* Side Wall mounting: use one (1) 2812 Kit per 3 ft. of track.



NOTE: Route door $\frac{3}{16}$ " deep by $\frac{1}{4}$ " wide to receive 102N Guide.



Options: See page SF-25

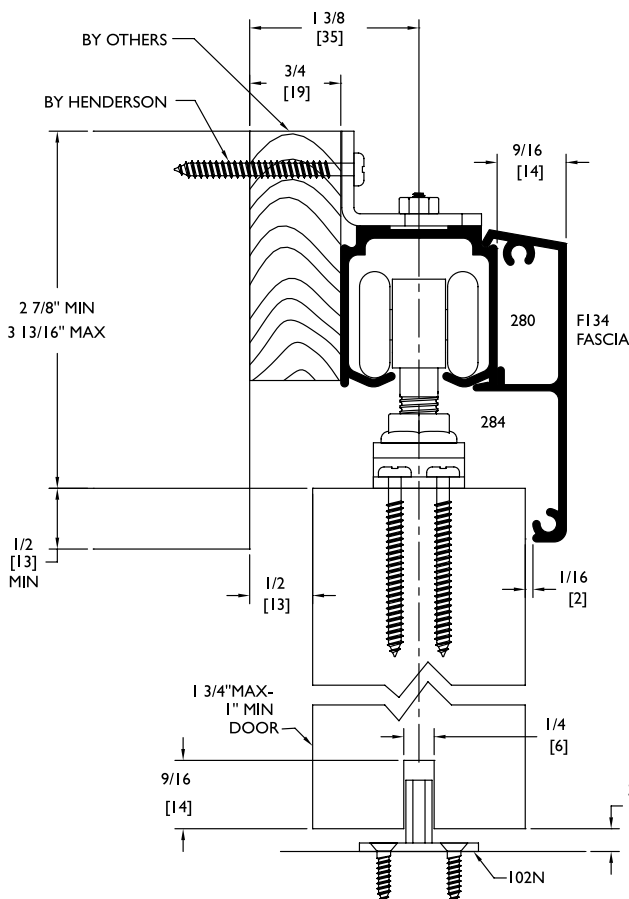
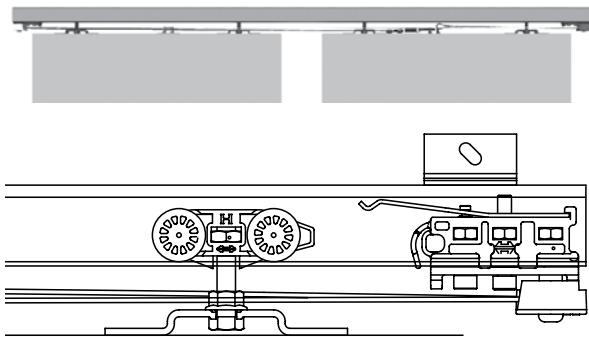
- Hardware Kit H100/200 pack
- Mounting Bracket 2812
- Track Stop (bumper) 287HD
- Bottom Channel 94A
- Fascia, Snap-On F134
- Roller Guide 106R/94
- Dual Guide Channel 2802BT

AVAILABLE FINISHES FOR PRODUCTS SHOWN ON THIS PAGE (see General Information section for finish chart)
A (Mill Finish Aluminum) C (Clear Anodized)

SIM200A Series

For Sliding Doors up to 48" wide and 200 lbs.
Manufactured by P.C. Henderson

HENDERSON



Simultaneous Action Unit (SIM) allows the simultaneous operation of two doors.

Configurations: Installations:

- Bi-parting
- Overhead Mount
- Side Wall Mount

Features:

- Allows individual bi-part doors to act as a single operating unit. When one door is opened or closed, the second door operates simultaneously
- 200 lb. panel capacity
- Needle bearing nylon wheels for smooth operation
- Mill finished aluminum track 280A

SIM200A Kits Include:

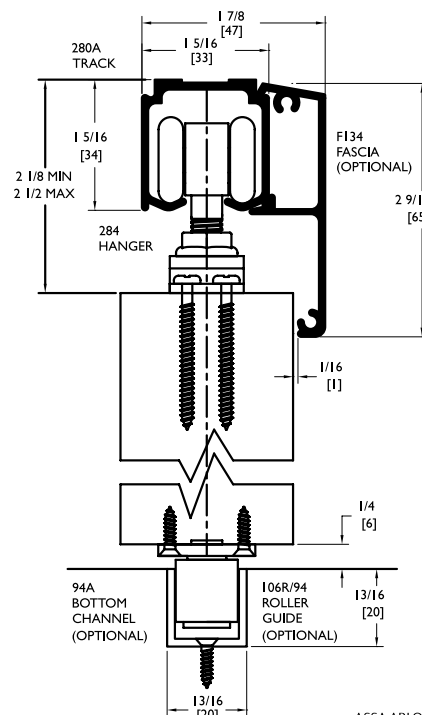
- 1 ea 280A Mill Finished Aluminum Track
- 4 ea 284 White Nylon Hangers
- 4 ea 601H Nylon In-Track Clip Stop
- 2 ea 102N White Nylon Mortise Guide
- 1 ea SIM100 Cable and Pulley Kit

Standard Kit Sizes

Part Number	Material	Track Length	Door Width
SIM200A/6	Aluminum	72"	2 @ 18"
SIM200A/8	Aluminum	96"	2 @ 24"
SIM200A/12	Aluminum	2 @ 72"	2 @ 36"
SIM200A/16	Aluminum	2 @ 96"	2 @ 48"

Options: See page SF-25

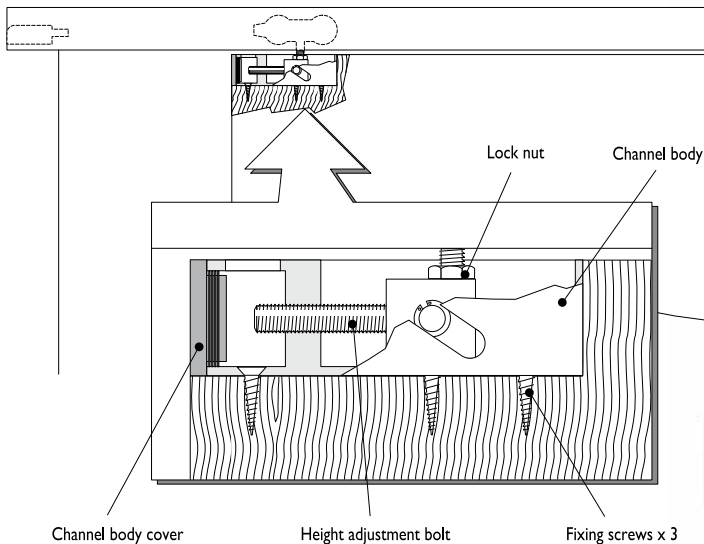
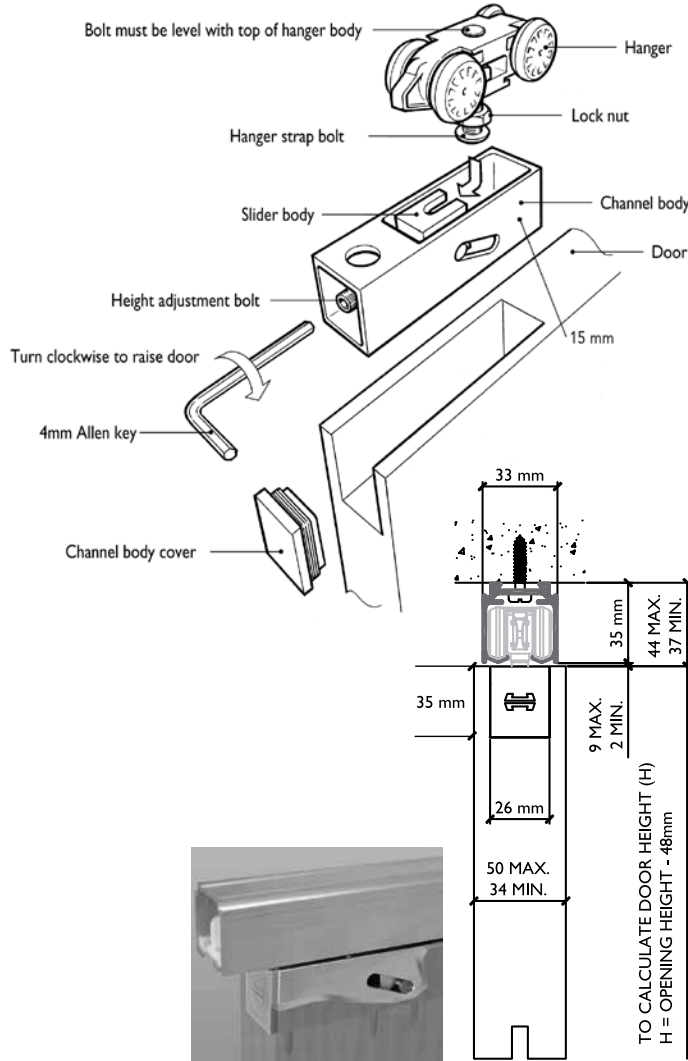
- Fascia **F134C**
- Side Wall Track Brackets **281** available as 5 pack only, 2815
Note: Need one at each end and no more than 3 feet in between. Fasteners included.
- End Plates **K134EP** (Use with F134C only)
- Bottom Channel **94A**
- Roller Guide **106R/94**
- Threshold **971A**
- Side Wall Mortise Guides **102WN** (nylon) and **102WA** (steel)



LP200 Series

For Sliding Panels up to 200 lbs.
Manufactured by P.C. Henderson

HENDERSON



Low profile design for use where space is limited.

Configurations: **Installations:**

- Bi-parting
- Single
- Overhead Mount
- Side Wall Mount

Features:

- Used to maximize door height
- Designed to give a modern clean finish with all parts concealed. Ideal for applications where minimal clearance between track and door is required
- Easy installation and adjustment
- 200 lb. panel capacity
- Needle bearing nylon wheels for smooth operation
- Mill finished aluminum track 280AN

LP200A Kits Include:

- 1 ea 280AN Aluminum Track
- 1 ea LH100 Hardware Kit

LH100 Hardware Kits Include:

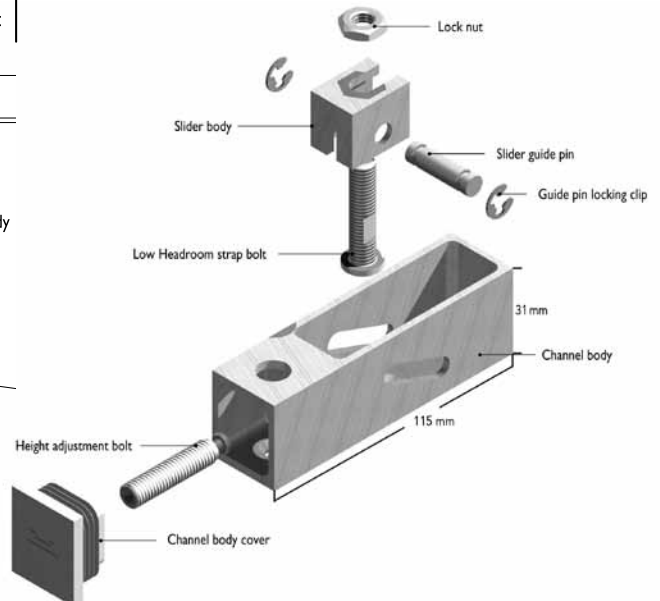
- 2 ea Low Head Room Units
- 2 ea End Caps
- 2 ea In-Track Clip Stops
- 1 ea Screw Pack
- 2 ea Low Head Room Hangers
- 1 ea 102N White Nylon Mortise Guide
- 1 ea Small Spanner and 4mm Allen Key

Standard Kit Sizes

Part Number	Material	Track Length	Door Width
LP200A/6	Aluminum	72"	36"
LP200A/8	Aluminum	96"	48"
LP200A/10	Aluminum	120"	60"

Options: See page SF-25

- Side Wall Track Bracket **281A**
- Bottom Channel **94A**
- Roller Guide **106R/94**
- Threshold **971A**



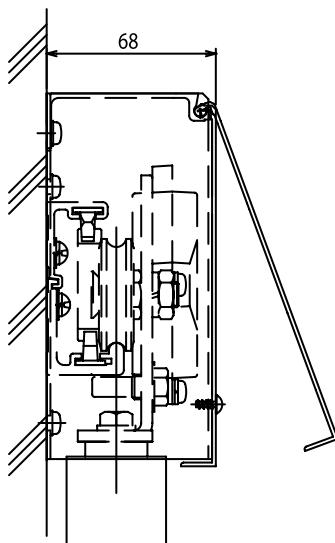
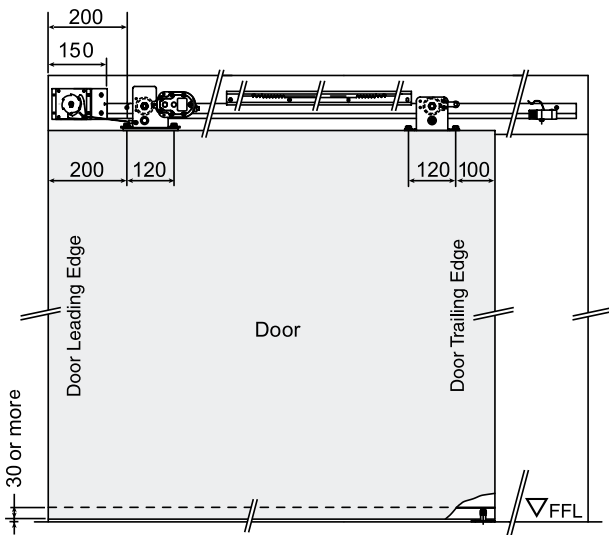
Sirocco Series

For Sliding Panels up to 200 lbs
Manufactured by P.C. Henderson

HENDERSON



Right Hand SIRRH Shown Above and Below



The Sirocco system is a quiet, user friendly self closing system which brings the door gently to a close.

The integrated hydraulic soft stop brings the door to a safe and cushioned close making it ideal for disabled access systems or public areas. The internal door brake can also be adjusted to allow the user to dictate the speed of opening preventing damage to the door and system.

Configurations: Installations:

- Single
- Side Wall Mount

Features:

- Self closing system for a single door from 31½" to 47¼" wide and up to 200lbs
- Interior applications only
- Comes complete with a hydraulically controlled soft close feature
- Adjustable closing speed
- Door brake to reduce opening speed to prevent damage to the door and system
- Optional hold open unit giving adjustable time delay before self closing
- Operational between temperature ranges of 50 to 104 degrees Fahrenheit

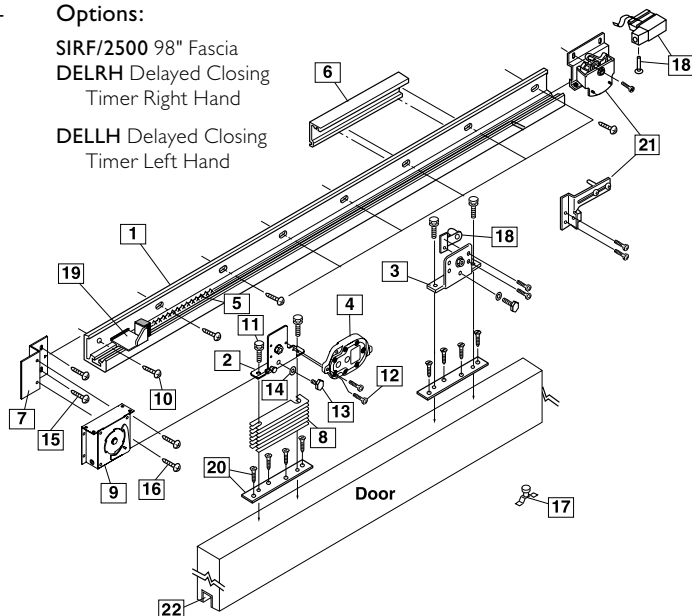
- SIRRH Right Hand Opening Kit
- SIRLH Left Hand Opening Kit

Sirocco Series Kits Include:

- 1 ea Track 86.61" long
- 1 ea Leading hanger
- 1 ea Trailing hanger
- 1 ea Hydraulic Control Unit
- 1 ea Closing brake rack
- 1 ea Opening brake rack
- 1 ea Power spring mounting bracket
- 7 ea Height adjustment plates
- 1 ea Power spring unit
- 1 ea Guide roller
- 1 ea Opening door stop
- 1 ea Door stop roller
- 1 ea Closing door stop
- 2 ea Wooden door plate. All required screws and bolts

Options:

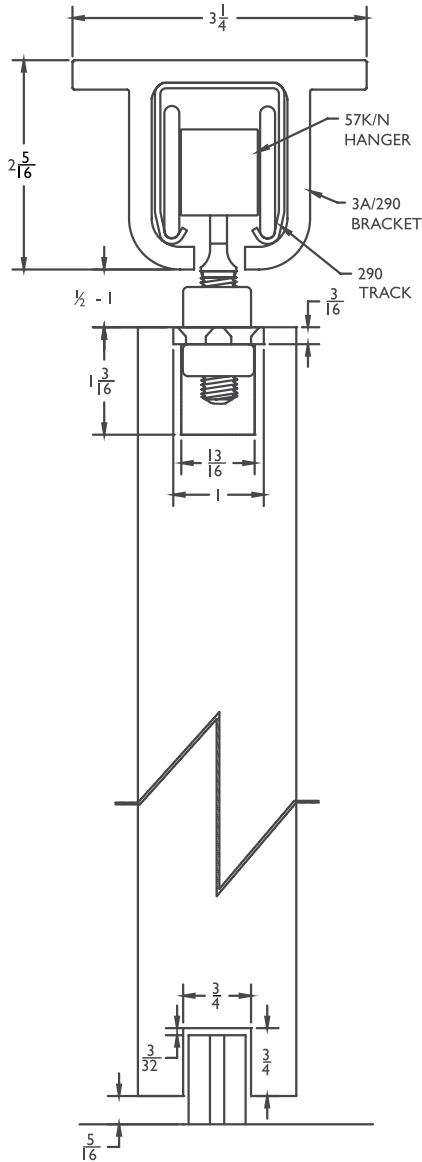
- SIRF/2500 98" Fascia
- DELRH Delayed Closing Timer Right Hand
- DELLH Delayed Closing Timer Left Hand



H300S-OH Series

For Sliding Panels up to 300 lbs.
Manufactured by P.C. Henderson

HENDERSON



Configurations: Installations:

- Bi-parting
- Single
- Overhead Mount

Features:

- Overhead mount system
- Nylon wheels for smooth operation
- 300 lb. panel capacity
- Galvanized steel track 290

H300S-OH Kits Include:

- 1 ea **290** Galvanized Steel Track
- **3A/290** Aluminum Alloy Overhead Mount Track Brackets (One at each end and no more than three feet in between)
- 2 ea **1A/290/EC** Aluminum Alloy End Caps
- 2 ea **57K/N** White Nylon Body and Wheels, Zinc Coated Steel Pendant Bolt Hangers
- 2 ea **HH3/290** Galvanized Steel In-Track Stop
- 1 ea **89/2N** Gray Nylon Mortise Guide

Standard Kit Sizes

Part Number	Material	Track Length	Door Width
H300S-OH/6	Steel	72"	36"
H300S-OH/8	Steel	96"	48"
H300S-OH/10	Steel	120"	60"
H300S-OH/12	Steel	144"	72"

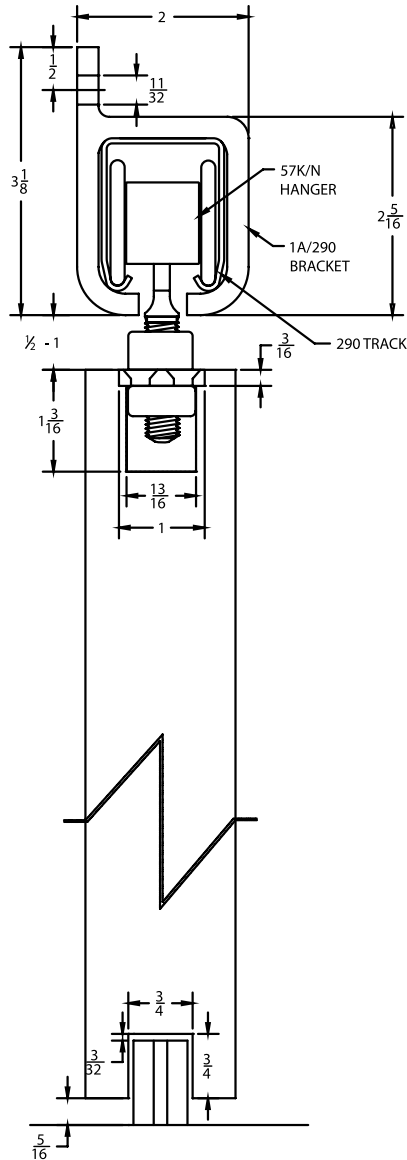
Options: See page SF-25

- Bottom Channel **94A**
- Roller Guide **106R/94**
- Threshold **971A**
- Mortise Guides **102N**

H300S-SW Series

For Sliding Panels up to 300 lbs.
Manufactured by P.C. Henderson

HENDERSON



Configurations: Installations:

- Bi-parting
- Single
- Side Wall Mount

Features:

- Side wall mount system
- Nylon wheels for smooth operation
- 300 lb. panel capacity
- Galvanized steel track 290

H300S-SW Kits Include:

- 1 ea **290** Galvanized Steel Track
- **1A/290** Side Wall Mount Track Brackets
(One at each end and no more than three feet in between)
- 2 ea **1A/290/EC** Aluminum Alloy End Caps
- 2 ea **57K/N** White Nylon Body and Wheels, Zinc Coated Steel Pendant Bolt Hangers
- 2 ea **HH3/290** Galvanized Steel In-Track Stops
- 1 ea **89/2N** Gray Nylon Mortise Guide

Standard Kit Sizes

Part Number	Material	Track Length	Door Width
H300S-SW/6	Steel	72"	36"
H300S-SW/8	Steel	96"	48"
H300S-SW/10	Steel	120"	60"
H300S-SW/12	Steel	144"	72"

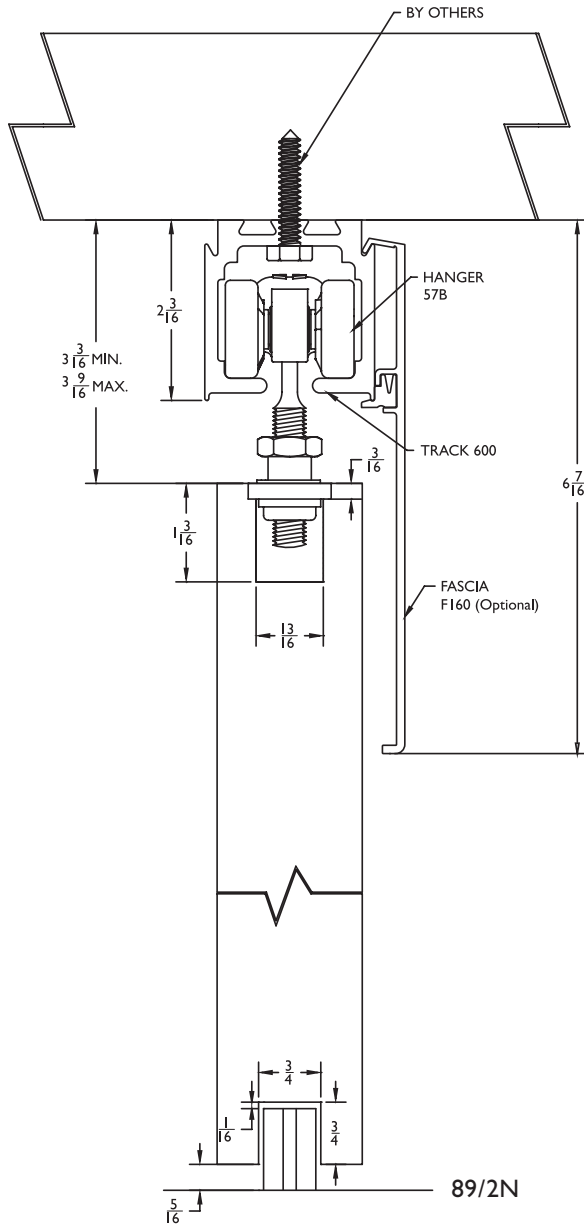
Options: See page SF-25

- Bottom Channel **94A**
- Roller Guide **106R/94**
- Mortise Guides **102N**
- Side Wall Mortise Guides **102WN** (nylon) and **102WA** (steel)

H440A-OH Series

For Sliding Panels up to 440 lbs.
Manufactured by P.C. Henderson

HENDERSON



Configurations: Installations:

- Bi-parting
- Single
- Overhead Mount

Features:

- Overhead mount system
- Nylon body and steel ball bearing nylon wheels for smooth operation
- 440 lb. panel capacity
- Mill finished aluminum track 600A

H440A-OH Kits Include:

- 1 ea **600A** Mill Finished Aluminum
- 2 ea **57B** Hangers: Gray Nylon Body, Zinc Coated Steel Pendant Bolt, Steel Ball Bearing Nylon Wheels
- 2 ea **601P** Nylon In-Track Clip Stop
- 1 ea **89/2N** Gray Nylon Mortise Guide

Standard Kit Sizes			
Part Number	Material	Track Length	Door Width
H440A-OH/6	Aluminum	72"	36"
H440A-OH/8	Aluminum	96"	48"
H440A-OH/10	Aluminum	120"	60"
H440A-OH/12	Aluminum	144"	72"

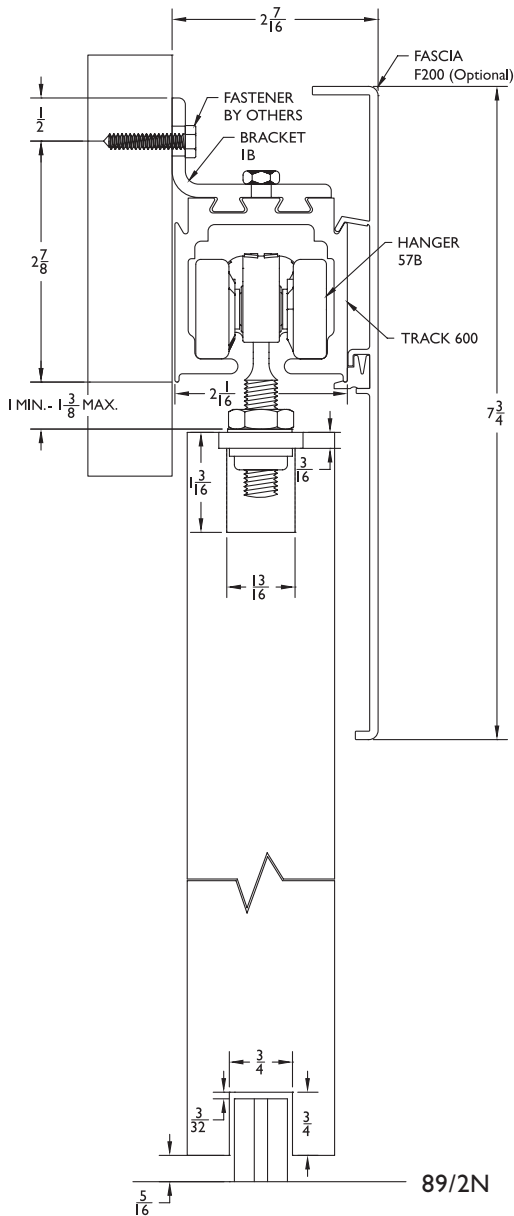
Options: See page SF-25

- Fascia **F160C**
- Bottom Channel **94A**
- Roller Guide **106R/94**
- Threshold **971A**
- Mortise Guides **102N**
- End Plate Kit **F160ECP** (Used With **F160C** Fascia and **600A** Track Only)

H440A-SW Series

For Sliding Panels up to 440 lbs.
Manufactured by P.C. Henderson

HENDERSON



Configurations: Installations:

- Bi-parting
- Single
- Side Wall Mount

Features:

- Side wall mount system
- Nylon body and steel ball bearing nylon wheels for smooth operation
- 440 lb. panel capacity
- Mill finished aluminum track 600A

H440A-SW Kits Include:

- 1 ea **600A** Mill Finished Aluminum Track
- **1B** Side Wall Mount Track Brackets (One at each end and no more than 3 feet in between)
- 2 ea **57B** Hangers: Gray Nylon Body, Zinc Coated Steel Pendant Bolt, Steel Ball Bearing Nylon Wheels
- 2 ea **601P** Nylon In-Track Clip Stop
- 1 ea **89/2N** Gray Nylon Mortise Guide

Standard Kit Sizes

Part Number	Material	Track Length	Door Width
H440A-SW/6	Aluminum	72"	36"
H440A-SW/8	Aluminum	96"	48"
H440A-SW/10	Aluminum	120"	60"
H440A-SW/12	Aluminum	144"	72"

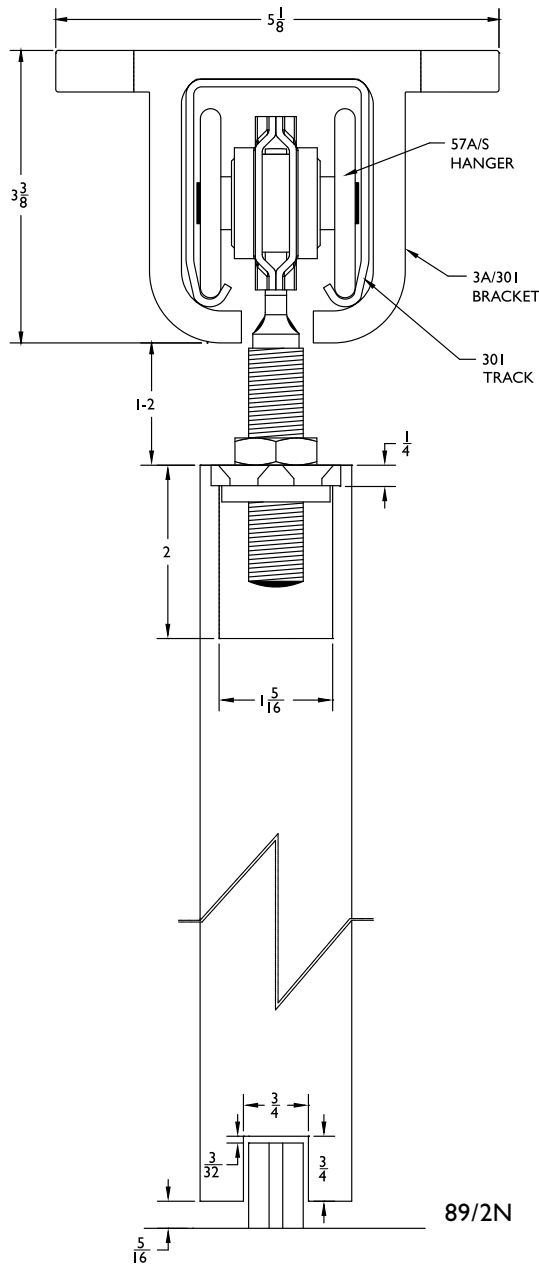
Options: See page SF-25

- Fascia **F200C**
- Bottom Channel **94A**
- Roller Guide **106R/94**
- Mortise Guides **102N**
- Side Wall Mortise Guides **102WN** (nylon) and **102WA** (steel)
- End Plate Kit **F200ECP** (Used With **F200C** Fascia and **600A** Track Only)

H600S-OH Series

For Sliding Panels up to 600 lbs.
Manufactured by P.C. Henderson

HENDERSON



Configurations: Installations:

- Bi-parting
- Single
- Overhead Mount

Features:

- Overhead mount system
- Heavy duty zinc coated steel
- Ball bearing wheels
- 600 lb. panel capacity
- Galvanized steel track 301

H600S-OH Kits Include:

- 1 ea **301** Galvanized Steel Track
- **3A/301** Aluminum Alloy Overhead Mount Track Brackets (One at each end and no more than three feet in between)
- 2 ea **1A/301/EC** Aluminum Alloy End Caps
- 2 ea **57A/S** Zinc Coated Steel Body, Wheels, and Pendant Bolt Hangers
- 2 ea **HH3/301** Galvanized Steel In-Track Stops
- 1 ea **89/2N** Gray Nylon Mortise Guide

Standard Kit Sizes

Part Number	Material	Track Length	Door Width
H600S-OH/6	Steel	72"	36"
H600S-OH/8	Steel	96"	48"
H600S-OH/10	Steel	120"	60"
H600S-OH/12	Steel	144"	72"

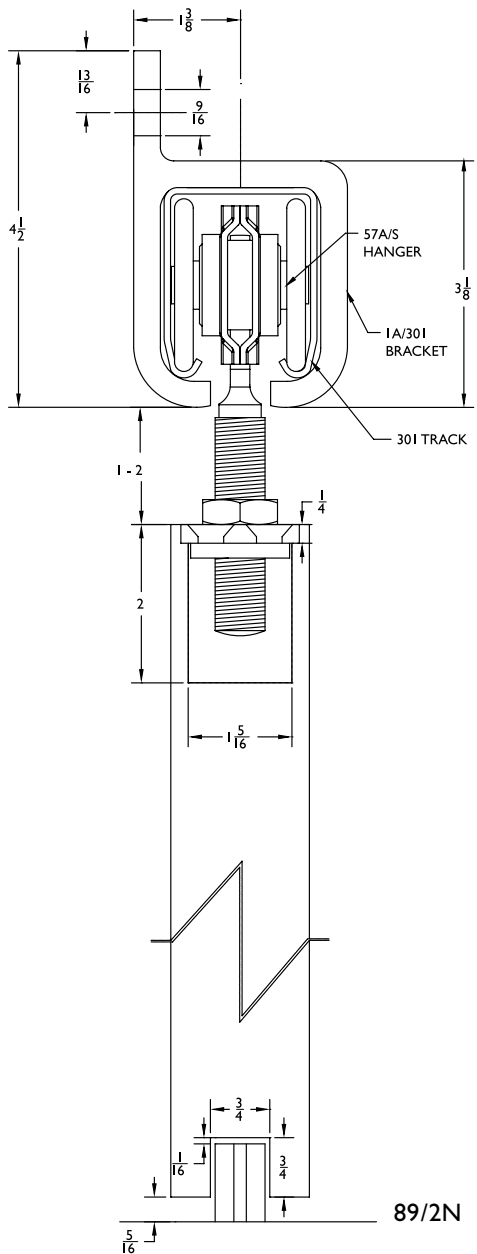
Options: See page SF-25

- Bottom Channel **94A**
- Roller Guide **106R/94**
- Mortise Guides **102N**
- Threshold **971A**

H600S-SW Series

For Sliding Panels up to 600 lbs.
Manufactured by P.C. Henderson

HENDERSON



Configurations: Installations:

- Bi-parting
- Single
- Side Wall Mount

Features:

- Side wall mount system
- Heavy duty zinc coated steel
- Ball bearing wheels
- 600 lb. panel capacity
- Galvanized steel track 301

H600S-SW Kits Include:

- 1 ea **301** Galvanized Steel Track
- **1A/301** Side Wall Mount Track Brackets
(One at each end and no than three feet in between)
- 2 ea **1A/301/EC** Aluminum Alloy End Caps
- 2 ea **57A/S** Zinc Coated Steel Body, Wheels, and Pendant Bolt Hangers
- 2 ea **HH3/301** Galvanized Steel In-Track Stops
- 1 ea **89/2N** Gray Nylon Mortise Guide

Standard Kit Sizes

Part Number	Material	Track Length	Door Width
H600S-SW/6	Steel	72"	36"
H600S-SW/8	Steel	96"	48"
H600S-SW/10	Steel	120"	60"
H600S-SW/12	Steel	144"	72"

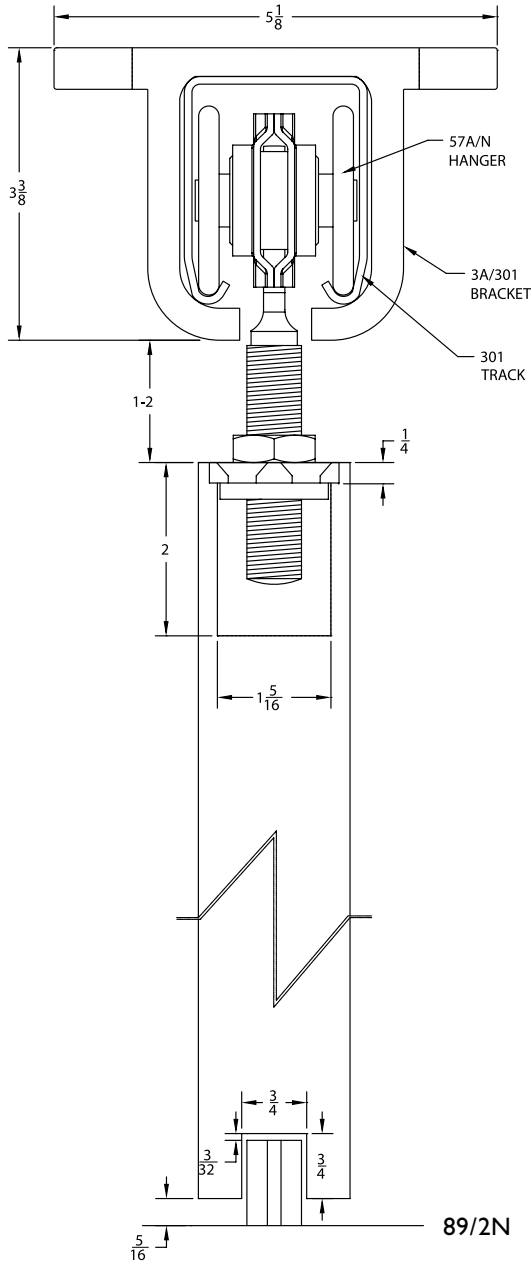
Options: See page SF-25

- Bottom Channel **94A**
- Roller Guide **106R/94**
- Mortise Guides **102N**
- Side Wall Mortise Guides **102WN**

H800S-OH Series

For Sliding Panels up to 800 lbs.
Manufactured by P.C. Henderson

HENDERSON



Configurations: Installations:

- Bi-parting
- Single
- Overhead Mount

Features:

- Overhead mount system
- Heavy duty zinc coated steel body
- Ball bearing nylon wheels for smooth operation
- 800 lb. panel capacity
- Galvanized steel track 301

H800S-OH Kits Include:

- 1 ea **301** Galvanized Steel Track
- **3A/301** Overhead Mount Track Brackets
(One at each end and no more than three feet in between)
- 2 ea **1A/301/EC** Aluminum Alloy End Caps
- 2 ea **57A/N** Zinc Coated Steel Body, Nylon Wheels, and Pendant Bolt Hangers
- 2 ea **HH3/301** Galvanized Steel In-Track Stop
- 1 ea **89/2N** Gray Nylon Mortise Guide

Standard Kit Sizes

Part Number	Material	Track Length	Door Width
H800S-OH/6	Steel	72"	36"
H800S-OH/8	Steel	96"	48"
H800S-OH/10	Steel	120"	60"
H800S-OH/12	Steel	144"	72"

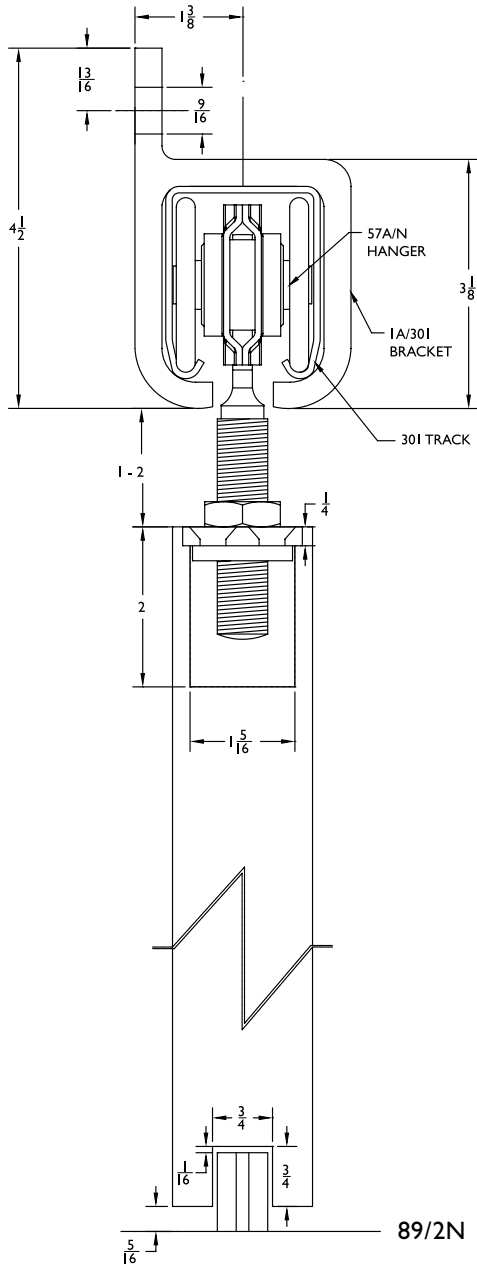
Options: See page SF-25

- Bottom Channel **94A**
- Roller Guide **106R/94**
- Mortise Guides **102N**
- Threshold **971A**

H800S-SW Series

For Sliding Panels up to 800 lbs.
Manufactured by P.C. Henderson

HENDERSON



Configurations: Installations:

- Bi-parting
- Single
- Side Wall Mount

Features:

- Side wall mount system
- Heavy duty zinc coated steel body
- Heavy ball bearing nylon wheels for smooth operation
- 800 lb. panel capacity
- Galvanized steel track 301

H800S-SW Kits Include:

- 1 ea **301** Galvanized Steel Track
- **1A/301** Aluminum Alloy Side Wall Mount Track Brackets
One at each end and no more than three feet in between)
- 2 ea **1A/301/EC** Aluminum Alloy End Caps
- 2 ea **57A/N** Zinc Coated Steel Body, Nylon Wheels, and
Pendant Bolt Hangers
- 2 ea **HH3/301** Galvanized Steel In-Track Stops
- 1 ea **89/2N** Gray Nylon Mortise Guide

Standard Kit Sizes

Part Number	Material	Track Length	Door Width
H800S-SW/6	Steel	72"	36"
H800S-SW/8	Steel	96"	48"
H800S-SW/10	Steel	120"	60"
H800S-SW/12	Steel	144"	72"

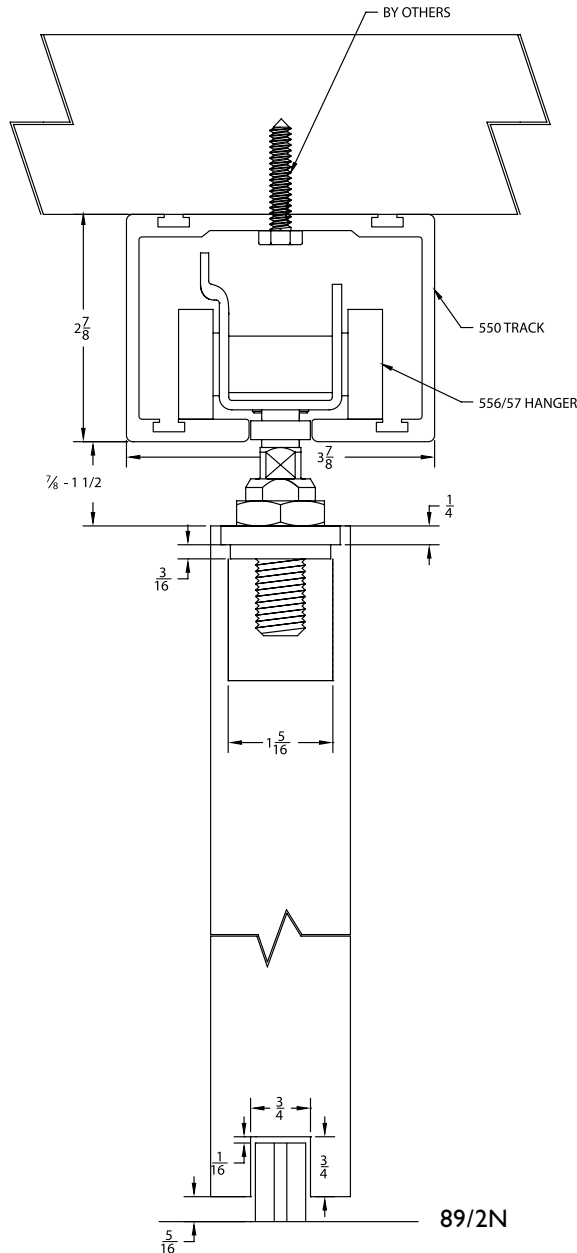
Options: See page SF-25

- Bottom Channel **94A**
- Roller Guide **106R/94**
- Mortise Guides **102N**
- Side Wall Mortise Guides **102WN** (nylon) and **102WA** (steel)

H1100A-OH Series

For Sliding Panels up to 1100 lbs.
Manufactured by P.C. Henderson

HENDERSON



Ideally suited for large doors that require high performance and an attractive finish.

Typical applications are hotels, conference centers, shop-fronts and showrooms.

Configurations: Installations:

- Bi-parting
- Single
- Overhead Mount

Features:

- For top hung wood and metal doors
- Heavy duty black painted steel body
- Ball bearing steel wheels
- 1100 lb. panel capacity
- Mill finished aluminum track 550A

H1100A-OH Kits Include:

- 1 ea **550A** Mill Finished Aluminum Track
- 2 ea **556/57** Painted Black Steel Body - Zinc Coated Steel
Wheels and Pendant Bolt Hangers
- 2 ea **HH3/301** Galvanized Steel In-Track Stops
- 1 ea **89/2N** Gray Nylon Mortise Guide

Standard Kit Sizes

Part Number	Material	Track Length	Door Width
H1100A-OH/6	Aluminum	72"	36"
H1100A-OH/8	Aluminum	96"	48"
H1100A-OH/10	Aluminum	120"	60"
H1100A-OH/12	Aluminum	144"	72"
H1100A-OH/16	Aluminum	197"	98"

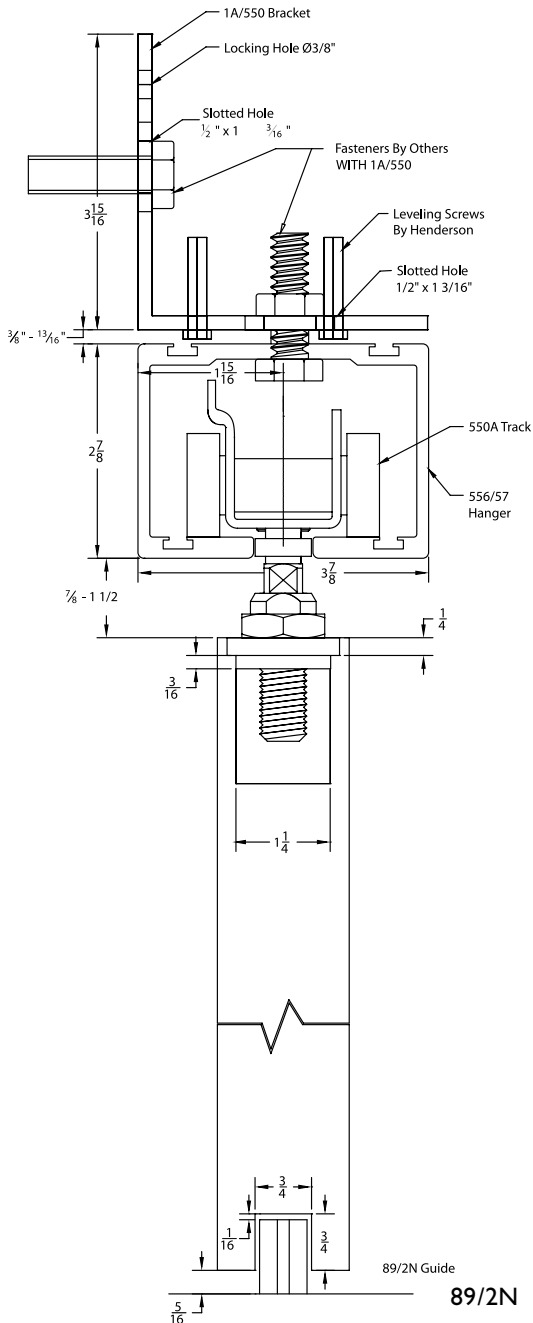
Options: See page SF-25

- Bottom Channel **94A**
- Roller Guide **106R/94**
- Threshold **971A**

H1100A-SW Series

For Sliding Panels up to 1100 lbs.
Manufactured by P.C. Henderson

HENDERSON



Ideally suited for large doors that require high performance and an attractive finish.

Typical applications are hotels, conference centers, shop-fronts and showrooms.

Configurations: Installations:

- Bi-parting
- Side Wall Mount
- Single

Features:

- Heavy duty black painted steel body ball bearing wheels
- 1100 lb. panel capacity
- Mill finished aluminum track 550A

H1100A-SW Kits Include:

- 1 ea **550A** Mill Finished Aluminum Track
- **1A/550** Aluminum Alloy Side Wall Track Bracket
Fasteners not included with 1A/550. (One at each end and no more than three feet in between)
- 2 ea **556/57** Painted Black Steel Body - Zinc Coated Steel
Wheels and Pendant Bolt Hangers
- 2 ea **HH3/301** Galvanized Steel In-Track Stops
- 1 ea **89/2N** Gray Nylon Mortise Guide

Standard Kit Sizes

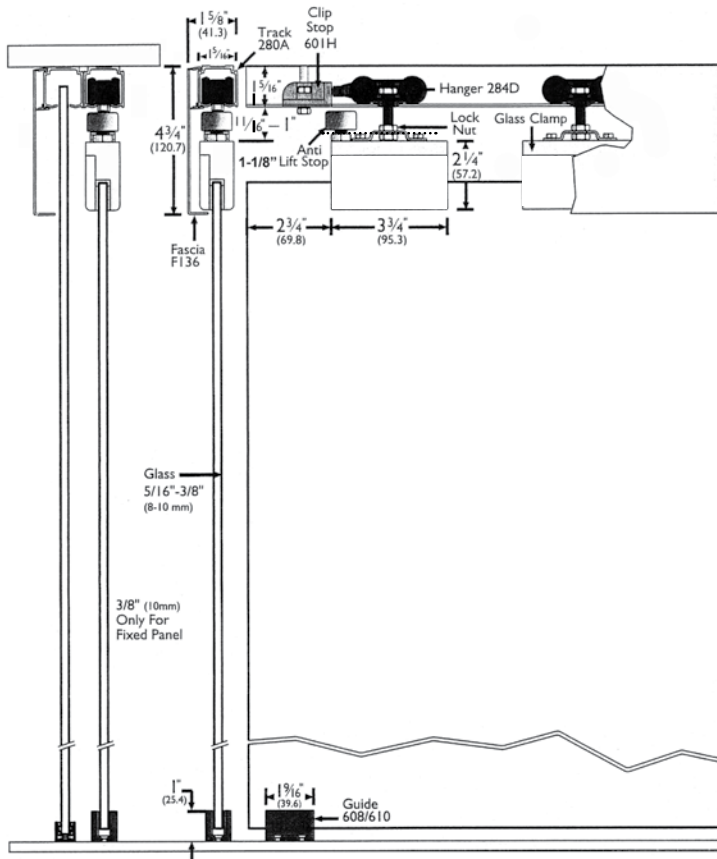
Part Number	Material	Track Length	Door Width
H1100A-SW/6	Aluminum	72"	36"
H1100A-SW/8	Aluminum	96"	48"
H1100A-SW/10	Aluminum	120"	60"
H1100A-SW/12	Aluminum	144"	72"
H1100A-SW/16	Aluminum	197"	98"

Options: See page SF-25

- Bottom Channel **94A**
- Roller Guide **106R/94**

Sliding Glass Series

Manufactured by P.C. Henderson
HENDERSON



For lightweight glass applications such as office doors and small glass partitions.

Capacity:

Max. door weight	165 lbs. (75kg)
Max. door height	7' 10" (2400mm)
Max. door width	4' 1" (1250mm)
Glass thickness	5/16" (8mm) & 3/8" (10mm)

Door Types:

Glass panels of 5/16" (8mm) or 3/8" (10mm) thickness in tempered or laminated glass.

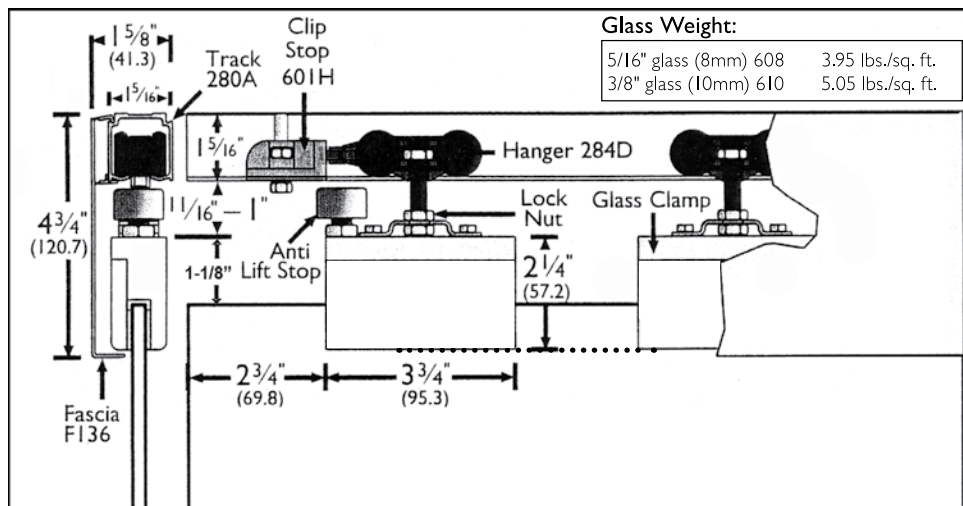
8/10/75 HUSKY Glass Clamp Kit:

- 2 ea **284D** Hangers
- 2 ea **GLASS** Clamps w/anti-lift stop
- 2 ea **601H** End stops
- 1 ea **610** Guide
- 1 ea **608** Guide

NOTE: When using glass clamps in combination with protective coatings for glass surfaces, ensure that the portion of the glass surface to be clamped is not treated.

Options: See page SF-25

- Track: **280A** (extruded aluminum)
Available in 6', 8', 10' & 12' lengths
- Face mount bracket: **281** available as 5 pack only, **2815**
NOTE: Need one on each end, and no more than 3 feet in between each bracket. Fasteners included.
- Fascias: **F136** Soffit Fixed Track
- Guides: **608** and **610** glass guides
- Accessories: **601H** retaining stop mounted within the track

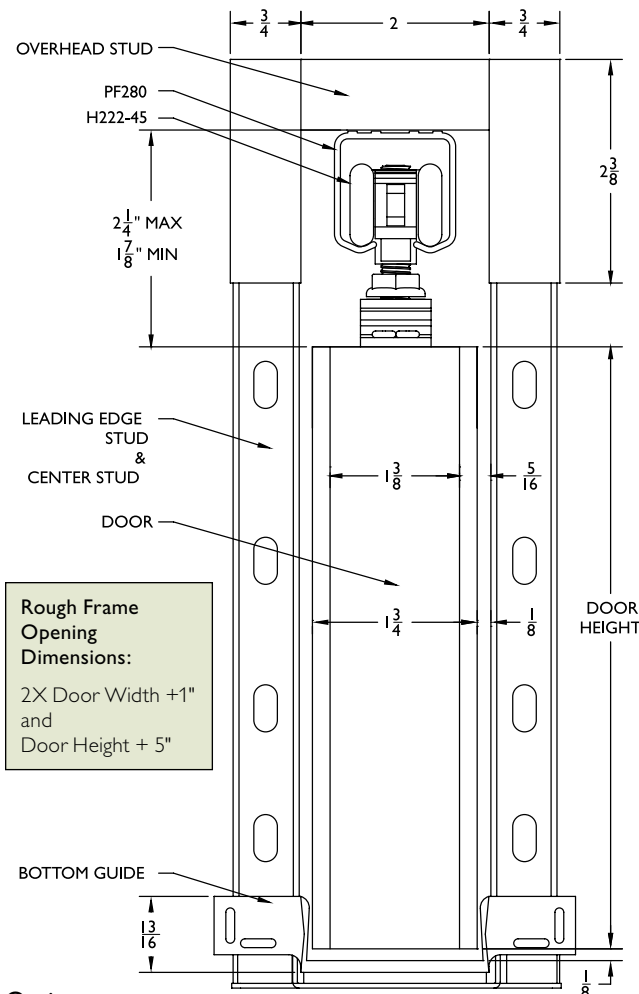


AVAILABLE FINISHES FOR PRODUCTS SHOWN ON THIS PAGE (see General Information section for finish chart)
A (Mill Finish Aluminum) C (Clear Anodized)

Pocket Frame Kit

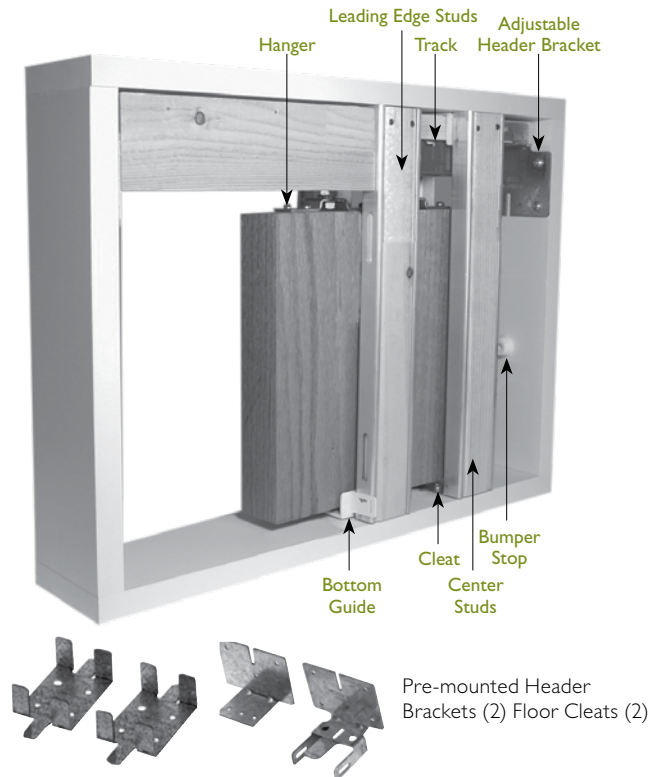
Manufactured by PEMKO

- Heavy duty hardware supports doors up to 175 lbs. each
- Door actuation requires less than 5 lbs of horizontal force, meeting ADA requirements
- Extruded aluminum track
- Solid wood studs encased in extruded aluminum reduces corrosion and minimizes bowing effects
- Standard kit is for 1 $\frac{3}{8}$ " door. For 1 $\frac{3}{4}$ " door, MUST use PF134KIT (see Options below)
- Chrome plated steel hangers are corrosion resistant and no maintenance is required
- Knock-down construction



Pocket Frame Kit Includes:

- 1 ea Header Track Assembly
- 4 ea PFAS_ Aluminum Cased Wood Studs
- 2 ea PFHB-1 and PFHB-2 Pre-Mounted Header Brackets
- 2 ea H222-45 Hangers
- 2 ea PFFC-8 Floor Cleats
- 1 ea PFBS Pocket Bumper Stop
- 1 ea PFBG-8 Pocket Frame Bottom Guide for 1 $\frac{3}{8}$ " Thick Doors



Options:

- PF134 KIT** - Must be ordered for 1 $\frac{3}{4}$ " doors
- PFAS88** - An extra pair of 88" center studs with floor cleat for 84" tall doors, for doors over 3' wide
- PFAS100** - An extra pair of 100" center studs with floor cleat for 96" tall doors, for doors over 3' wide
- PFCDKIT** - Conversion Kit to achieve a bipart double door frame
- PFKIT-4** - Hardware Kit for PEMKO Pocket Frame Kit for 1 $\frac{3}{4}$ " thick doors (Each contains 2-H222-45 Hangers, 1-PFBS Bumper Stop, 1- PFBG-4 Guide, 2 PFHS Header Shims, 2-PFFC-4 Floor Cleats)
- PFKIT-8** - Hardware Kit for PEMKO Pocket Frame Kit for 1 $\frac{3}{8}$ " thick doors (Each contains 2-H222-45 Hangers, 1-PFBS Bumper Stop, 1- PFBG-8 Guide, 2-PFFC-8 Floor Cleats)

Available Kits*

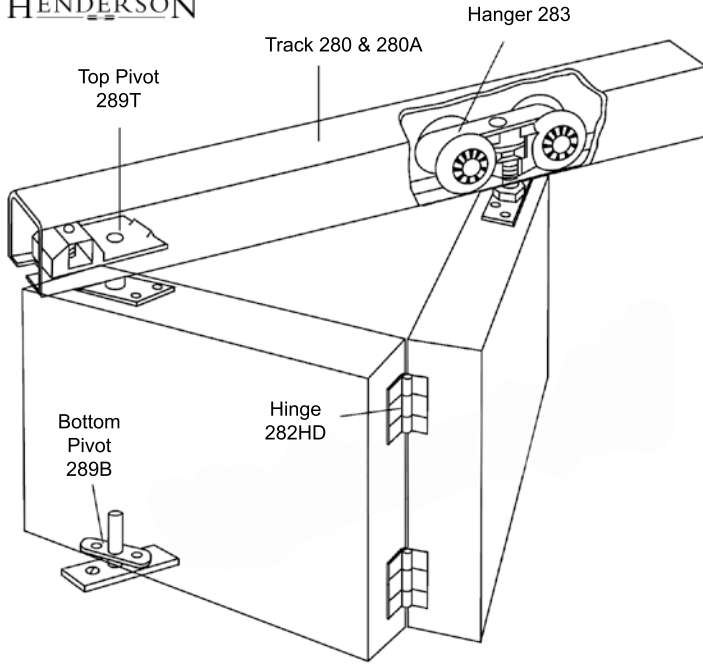
2 x 4 (3 $\frac{1}{2}$ " Stud)	2 x 6 (5 $\frac{1}{2}$ " Stud)	2 x 6 (6" Stud)	Net Door Size (The Kits can be trimmed in field)
PF28200A6080	PF28200A6080-2x6	PF28200A6080-SP6	2'6" x 6'8"
PF28200A7280	PF28200A7280-2x6	PF28200A7280-SP6	3'0" x 6'8"
PF28200A9680	PF28200A9680-2x6	PF28200A9680-SP6	4'0" x 6'8"
PF28200A6084	PF28200A6084-2x6	PF28200A6084-SP6	2'6" x 7'0"
PF28200A7284	PF28200A7284-2x6	PF28200A7284-SP6	3'0" x 7'0"
PF28200A9684	PF28200A9684-2x6	PF28200A9684-SP6	4'0" x 7'0"
PF28200A6096	PF28200A6096-2x6	PF28200A6096-SP6	2'6" x 8'0"
PF28200A7296	PF28200A7296-2x6	PF28200A7296-SP6	3'0" x 8'0"
PF28200A9696	PF28200A9696-2x6	PF28200A9696-SP6	4'0" x 8'0"

*Custom sizes available call for information

Folding 100 Series

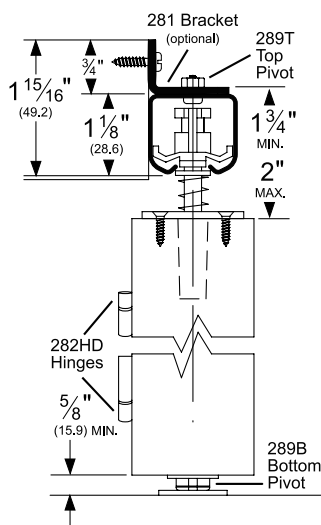
For Folding Doors and Room Dividers up to 100 Lbs.
For Doors up to 24" Wide x 96" Tall
Manufactured by P.C. Henderson

HENDERSON

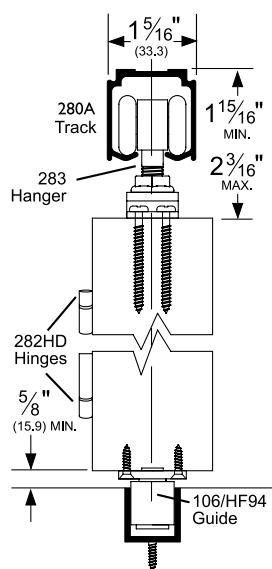


NOTE: Allow 1/4" clearance at pivot jambs and 1/8" in between hinged doors if hinges are semi mortised. Allow 3/16" between hinged doors if hinges are surface mounted. Allow 1/8" between doors meeting in the center of the opening on HF4 kits and allow 1/8" between wall and end panel on HF2 kits.

280 Side Wall Mounted



280A Overhead Mounted



High quality hardware makes medium weight folding doors efficient and easy to use. Two and four leaf kits are available.

Two Panel:

HF2/100A Kits Include:

- 1 ea 280A Mill Finished Aluminum Track
- 1 ea 283 Hanger
- 1 ea 289T Top Pivot
- 1 ea 289B Bottom Pivot
- 3 ea 282HD Hinges
- 1 ea 106HF/94 Roller Guide
- 1 ea 94A Aluminum Guide Channel
- 1 ea Adjusting Wrench and Mounting Hardware

Four Panel:

HF4/100A Kits Include:

- 1 ea 280A Mill Finished Aluminum Track
- 2 ea 283 Hangers
- 2 ea 289T Top Pivots
- 2 ea 289B Bottom Pivots
- 6 ea 282HD Hinges
- 2 ea 106HF/94 Roller Guide
- 1 ea 94A Aluminum Guide Channel
- 1 ea Adjusting Wrench and Mounting Hardware

Standard Kit Sizes

Part Number	Material	# of Panels	Track Length
HF2/100A/2	Aluminum	2	24"
HF2/100A/2'6	Aluminum	2	30"
HF2/100A/3	Aluminum	2	36"
HF2/100A/4	Aluminum	2	48"
HF4/100A/4	Aluminum	4	48"
HF4/100A/5	Aluminum	4	60"
HF4/100A/6	Aluminum	4	72"
HF4/100A/8	Aluminum	4	96"
HF2/100/4*	Steel	2	48"
HF4/100/8*	Steel	4	96"

*Steel kits include the same components as above, except track is 1ea 280 galvanized steel.

Options: See page SF-25

Mounting Bracket **281** available as 5 pack only, **2815**
Threshold **971A**

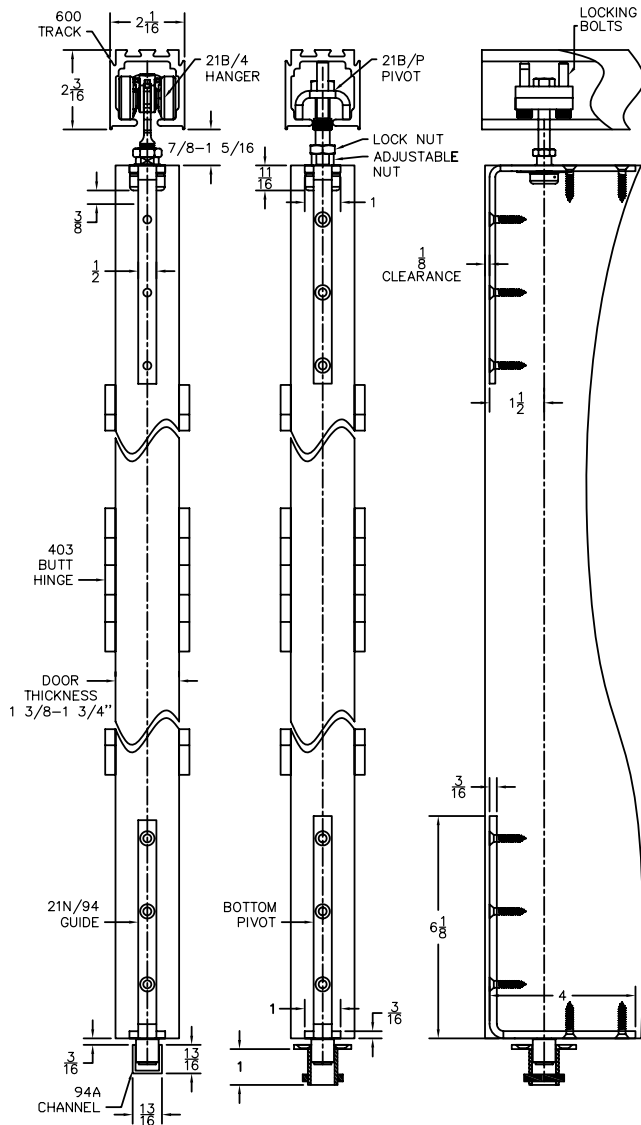
Pacer Interior End Fold Series

For Folding Doors and Room Dividers up to 165 lbs.

For Doors up to 36" Wide x 106" Tall

Manufactured by P.C. Henderson

HENDERSON



For top-hung, medium weight, interior, partition doors.

Ideal in both residential and commercial applications requiring end folding doors.

Two Panel: plan 1

PIF2/165A Kits Include:

- 1 ea 600A Mill Finished Aluminum Track
- 1 ea 21B/P Top and Bottom Pivot Assembly
- 1 ea 21BO/4 Nylon Body and Wheels, Zinc Coated Steel Pendant Bolt and Door Bracket Hanger
- 1 ea 21N/94 Nylon Roller Guide on Zinc Coated Steel Door Bracket Bottom Guide
- 4 ea 403/2 Aluminum Alloy Butt Hinges
- 1 ea 94A Aluminum Guide Channel

Four Panel: plan 2

PIF4/165A Kits Include:

- 1 ea 600A Mill Finished Aluminum Track
- 2 ea 21B/P Top and Bottom Pivot Assembly
- 2 ea 21BO/4 Nylon Body and Wheels, Zinc coated steel Pendant Bolt and Door Bracket Hanger
- 2 ea 21N/94 Nylon Roller Guide on Zinc Coated Steel Door Bracket Bottom Guide
- 8 ea 403/2 Aluminum Alloy Butt Hinges
- 1 ea 94A Aluminum Guide Channel

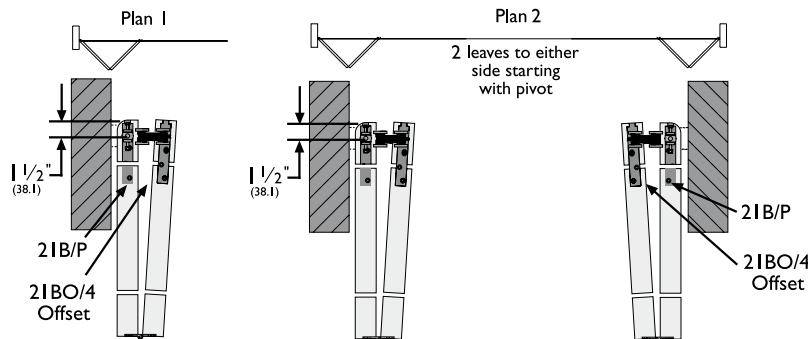
Standard Kit Sizes

Part Number	Material	# of Panels	Track Length
PIF2/165A/6	Aluminum	2	72"
PIF4/165A/6	Aluminum	4	72"
PIF4/165A/8	Aluminum	4	96"
PIF4/165A/12	Aluminum	4	2 @ 72"

Options: See page SF-25

Threshold 971A

Note: Allow $\frac{3}{8}$ " clearance at pivot jambs and $\frac{1}{8}$ " in between hinged doors if hinges are semi mortised. Allow $\frac{7}{16}$ " between hinged doors if hinges are surface mounted. Allow $\frac{1}{8}$ " between doors meeting in the center of the opening on PIF4 kits and allow $\frac{1}{8}$ " between wall and end panel on PIF2 kits.



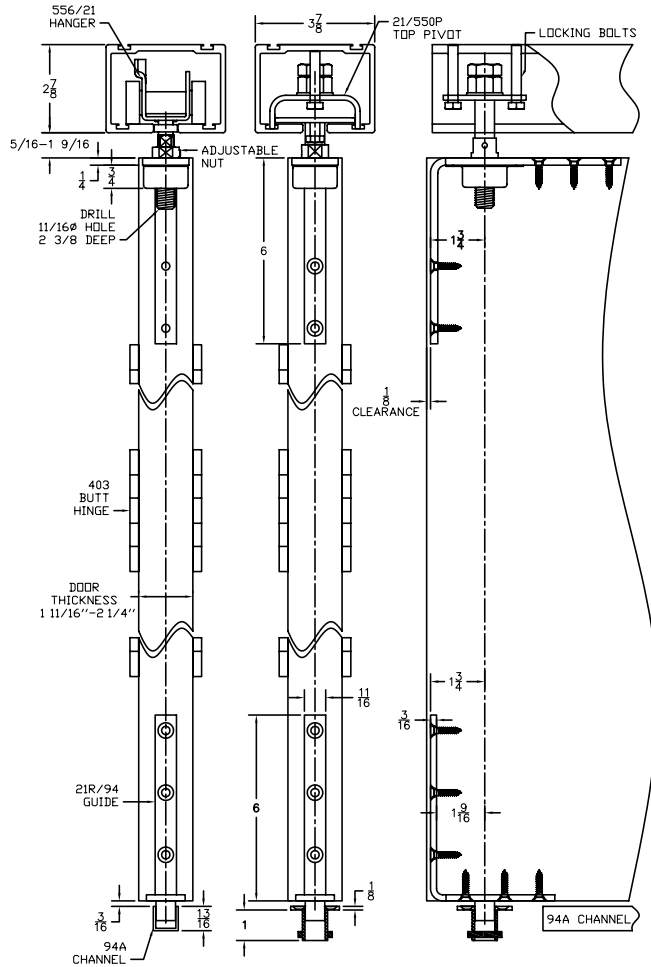
Flexirol Interior End Fold Series

For Folding Doors and Room Dividers up to 275 lbs.

For Doors up to 48" Wide x 177" Tall

Manufactured by P.C. Henderson

HENDERSON



For top-hung, heavy weight, interior, partition doors.

Specifically designed for commercial applications requiring end folding doors.

Two Panel: plan 1

FIF2/275A Kits Include:

- 1 ea 550A Mill Finished Aluminum Track
- 1 ea 21/550/P Top and Bottom Pivot Assembly
- 1 ea 556/21 Zinc Coated Steel Wheels, Pendant Bolt, Body, and Door Bracket
- 1 ea 21R/94 Bottom Guide
- 4 ea 403/2 Aluminum Alloy Butt Hinges
- 1 ea 94A Aluminum Guide Channel

Four Panel: plan 2

FIF4/275A Kits Include:

- 1 ea 550A Mill Finished Aluminum Track
- 2 ea 21/550/P Top and Bottom Pivot Assembly
- 2 ea 556/21 Zinc Coated Steel Wheels, Pendant Bolt, Body, and Door Bracket
- 2 ea 21R/94 Bottom Guide
- 8 ea 403/2 Aluminum Alloy Butt Hinges
- 1 ea 94A Aluminum Guide Channel

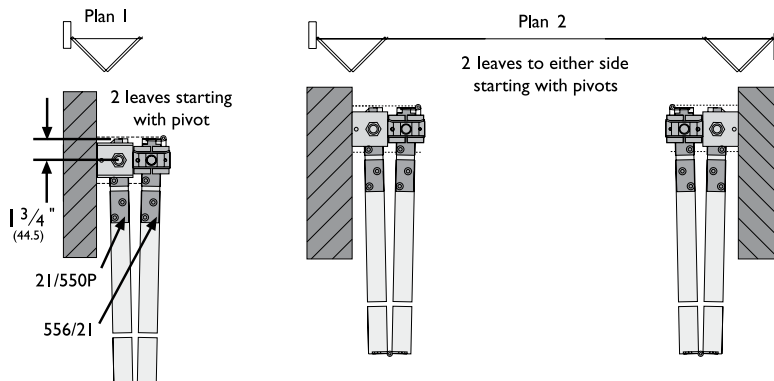
Standard Kit Sizes

Part Number	Material	# of Panels	Track Length
FIF2/275A/6	Aluminum	2	72"
FIF2/275A/8	Aluminum	2	96"
FIF4/275A/6	Aluminum	4	72"
FIF4/275A/8	Aluminum	4	96"
FIF4/275A/12	Aluminum	4	2 @ 72"
FIF4/275A/16	Aluminum	4	2 @ 96"

Options: See page SF-25

Threshold 971A

Note: Allow 1/2" clearance at pivot jambs and 1/8" in between hinged doors if hinges are semi mortised. Allow 3/16" between hinged doors if hinges are surface mounted. Allow 1/8" between doors meeting in the center of the opening on FIF4 kits and allow 1/8" between wall and end panel on FIF2 kits.



Options & Accessories

A visual guide to various parts

Mounting Brackets



281

(Sold in 5 packs, 2815)

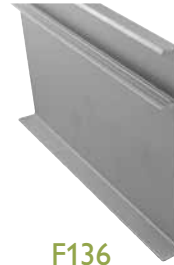


2812

Fascia



F134



F136

End plates



K134EP

Stops



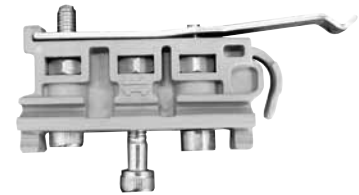
286



287HD



PFBS



601H

Guides



102N



PFBG-4



PFBG-8



106R/94



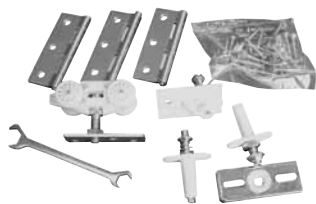
106N/94

Bottom Channel

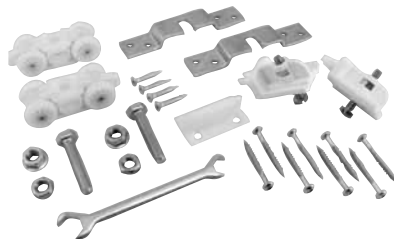


102WA

Hardware Kits



**Folding
HF2/100 Pack**



**Sliding
H100/200 Pack**



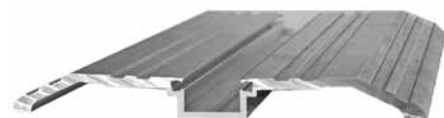
94A



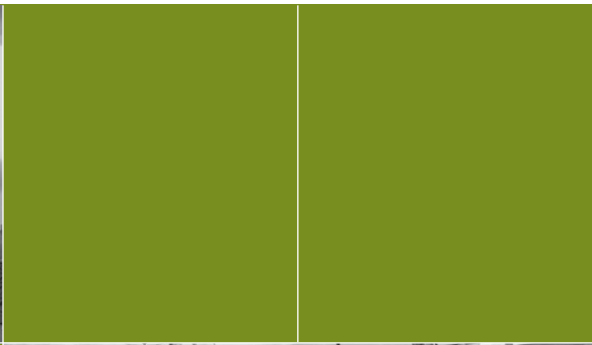
2802BT



**Glass Clamp Kit
8/10/75 Husky**



971A



PEMKO
ASSA ABLOY

ASSA ABLOY, the global leader
 in door opening solutions



Memphis, TN USA
 P.O. Box 18966
 Memphis, TN 38181
 P: 800.824.3018
 F: 800.243.3656

Ventura, CA USA
 P.O. Box 3780
 Ventura, CA 93006
 P: 800.283.9988
 F: 800.283.4050

Vancouver, BC Canada
 103-2480 Mt. Lehman Rd.
 Abbotsford, BC V2T 6W3
 P: 877.535.7888
 F: 877.535.7444

Toronto, ON Canada
 160 Four Valley Dr.
 Vaughan, ON L4K 4T9
 P: 877.535.7888
 F: 877.535.7444

Copyright © 2012, Pemko Manufacturing Co., an ASSA ABLOY Group company. All rights reserved.
 Reproduction in whole or in part without the express written permission of Pemko Manufacturing Co. is prohibited.

www.pemko.com

80037 10/2012