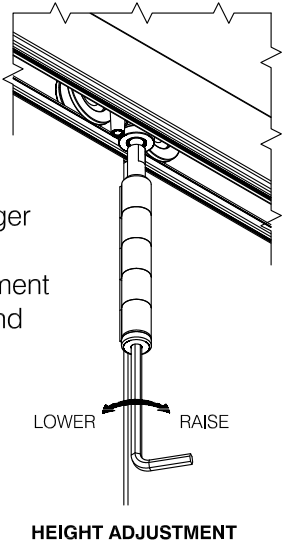
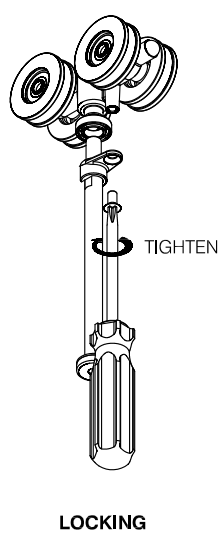


11 ADJUSTMENT

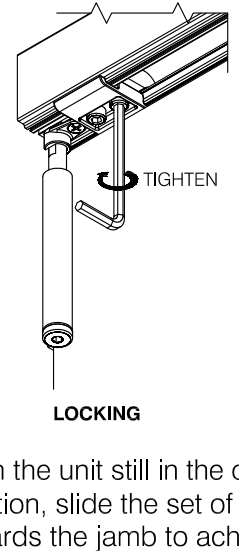
Intermediate Hanger Illustrated. Same method of adjustment applies to Pivot and End Hanger.



A. Close leaves and adjust the door height to achieve an equal gap between the top of the leaves and the track (a 9 [0.35"] gap is recommended).

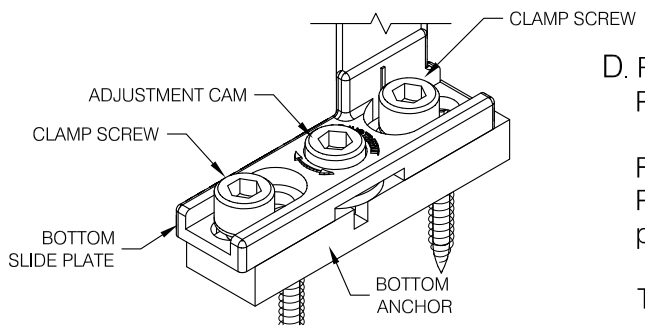


B. Once adjustment is complete, slide the Locking Clamp into position and secure with the M5 screw provided.



C. With the unit still in the closed position, slide the set of leaves towards the jamb to achieve the desired gap between the jamb and the Pivot leaf.

Secure the Top Pivot Block by tightening the two Locking Screws.



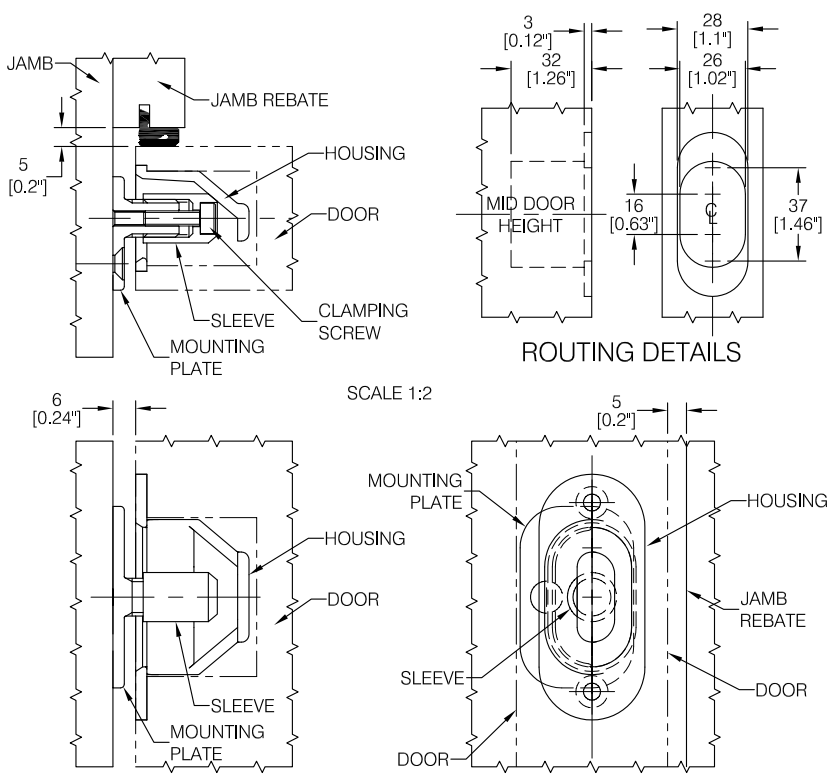
D. Replace the Bottom Pivot Bolt and tighten to Bottom Slide Plate. Mark the position of the Bottom Slide Plate.

Fold the leaves and adjust the position of the Bottom Slide Plate to the mark using the adjustment cam and Allen key provided.

Tighten the clamping screws.

12 OPTIONAL SECURITY ALIGNER

- A. Rout cavity at mid door height in door edge to sizes shown and attach Housing.
- B. Screw Mounting Plate to jamb with wide side away from jamb rebate so that the thread axis is 5 [0.2"] plus half door thickness from jamb rebate and at the same height from the floor as the middle of the cavity in the door edge.
- C. Loosen Clamp Screw and adjust Sleeve in small increments to touch the Housing (away from jamb for more contact with door) whilst keeping the Clamp Screw wholly within the Sleeve to avoid damage.
- D. When the desired position is obtained, tighten the Clamp Screw firmly.



13 CARE AND MAINTENANCE

See Care and Maintenance label.